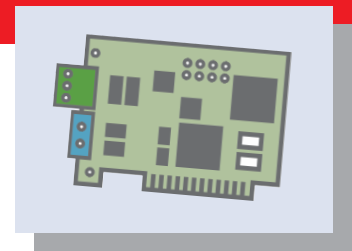


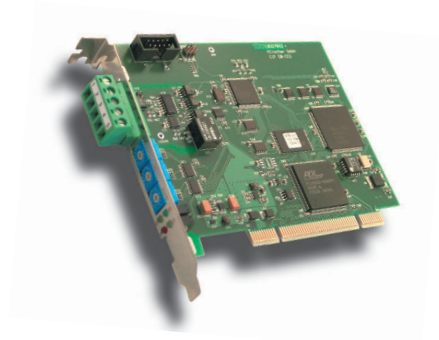
# CC-Link

CC-Link



## The new fieldbus standard in Asia

- Fast “Time to Market”
- Cheaper than own development
- Easy to configure
- MFP3 technology



### Potential uses

It is obvious even today: CC-Link will establish itself as the standard for fieldbus communication in Asia. If you, too, want to be successful in this market, use this already developed solution from Hilscher. We have the corresponding technology available now. It will enable you to reduce the development effort and its associated costs for your future projects.

### CC-Link

CC-Link ensures high-speed communications on the control and fieldbus level between data and field devices such as controls, sensors or actuators.

CC-Link was originally developed in 1996 by Mitsubishi Electric and has since come into widespread use with more than 2 Mio. installed stations. A significant contribution to this success has been made by the CLPA (CC-Link Partners Association), an international consortium of well-known manufacturers of CC-Link-compatible products to which Hilscher belongs.

# CC-Link – Technical Information

## Interface boards and communication modules

Automation field devices or PC-based controls equipped with these CC-Link boards can be integrated into CC-Link networks as Remote Device Stations. The implementation of CC-Link is based on the MFP3 communication ASIC from Mitsubishi and permits to work as up to 4 stations on one interface board. Each station has 32 binary and 4 words of data.

### CIF 50-CCS

The CIF 50-CCS interface card is a PCI card for use in the standard PC environment. Drivers for Windows, Linux and QNX are available.

### CIF 104-CCS

The CIF 104-CCS interface card is a PC/104 card for use in PC-based controls which are used directly in the automation level. Drivers for Windows, Linux and QNX are available.

### COM-CA-CCS / COM-CN-CCS

The COM-CA-CCS and COM-CN-CCS communication modules are meant for integration into field devices or programmable controllers. Via a Dual-port-memory access, these modules can be integrated directly into the application program.

## Product Overview

Fieldbus	Card type PCI	PC/104
CC-Link-Slave	CIF 50-CCS	CIF 104-CCS

Fieldbus	Communication module
CC-Link-Slave	COM-CA-CCS COM-CN-CCS

## Technical Data

CC-Link	
Access to	Dual-port-memory
Device Type	Remote Device Station
Transmission Rate	156 kbps / 625 kbps 2,5 Mbps / 5 Mbps 10 Mbps
Interface	RS-485, potential free
Connector	Combicon 5-pin male
Controller	MFP3
Data Connection	Polling
Data	max. 4 Stations each 32 Bit Input 32 Bit Output 4 Words Input 4 Words Output
Configuration	
	Rotary switch / jumper or application program
LED Display	
CIF 50-CCS, CIF 104-CCS	RDY, RUN, STA, ERR
COM-CA-CCS, COM-CN-CCS	SYS, COM
Power Supply	
CIF 50-CCS	3,3 V ± 5% / 1410 mA 5 V ± 5% / 580 mA
CIF 104-CCS	5 V ± 5% / 500 mA
COM-CA-CCS, COM-CN-CCS	3,3 V ± 5% / 450 mA
Dimensions	
CIF 50-CCS	134 x 107 x 20 mm
CIF 104-CCS	90 x 96 x 25 mm
COM-CA-CCS, COM-CN-CCS	70 x 30 x 20 mm
Operating Temperature	
CIF 50-CCS, CIF 104-CCS	0 ... 50 °C
COM-CA-CCS, COM-CN-CCS	0 ... 60 °C
EMC	
Immunity	EN 61000-6-2 Industrial Environment
Emission	EN 61000-6-4 Class A

## Headquarters

**Germany**  
Hilscher Gesellschaft für  
Systemautomation mbH  
Rheinstrasse 15  
65795 Hattersheim  
Phone: +49 (0) 6190 9907-0  
Fax: +49 (0) 6190 9907-50  
E-Mail: info@hilscher.com  
Web: www.hilscher.com

## Subsidiaries

**France**  
Hilscher France S.a.r.l.  
69500 Bron  
Phone: +33 (0) 4 72 37 98 40  
E-Mail: info@hilscher.fr  
Web: www.hilscher.com

**Italy**  
Hilscher Italia srl  
20090 Vimodrone (MI)  
Phone: +39 02 25007068  
E-Mail: info@hilscher.it  
Web: www.hilscher.com

**Japan**  
Hilscher Japan KK  
Tokyo, 160-0022  
Phone: +81 (0) 3-5362-0521  
E-Mail: info@hilscher.jp  
Web: www.hilscher.com

**Switzerland**  
Hilscher Swiss GmbH  
4500 Solothurn  
Phone: +41 (0) 32 623 6633  
E-Mail: info@hilscher.ch  
Web: www.hilscher.com

**USA**  
Hilscher North America, Inc.  
Lisle, IL 60532  
Phone: +1 630-505-5301  
E-Mail: info@hilscher.us  
Web: www.hilscher.com

## Distributors

**Australia**  
Fieldbus Specialists  
www.fieldbus.com.au

**Austria**  
VIPA Elektronik-Systeme GmbH  
www.elektronik-systeme.psoft.at

**Belgium**  
TelereX N.V.  
www.telereX-europe.com

**Brazil**  
SoftBrasil Automacao Ltda.  
www.softbrasil.com.br

**Chile**  
ROLEC S.A.  
www.rolec.cl

**China**  
Citect (China) Ltd.  
www.citect.com

**Czech Republic**  
ZPA-Industry a.s.  
www.zpaindustry.cz

**Denmark**  
Novotek Denmark A/S  
www.novotek.dk

**Finland**  
Novotek Finland Oy  
www.novotek.fi

**France**  
HIGH'COM  
www.highcom.fr

**Korea**  
CREVIS Co.,LTD  
www.crevis.co.kr

**Netherlands**  
TelereX Nederland B.V.  
www.telereX-europe.com

**Norway**  
AD Elektronikk AS  
www.ade.no

**Poland**  
INTROL Sp. z o.o.  
www.introl.pl

**Russia**  
ProSoft Ltd.  
www.prosoft.ru

**Singapore**  
Vector Info Tech Pte Ltd  
www.vectorinfotech.com

**South Africa**  
Innomatic  
www.innomatic.co.za

**Spain**  
Sistel Control s.l.  
www.sistelcontrol.com

**Sweden**  
Novotek Sverige AB  
www.novotek.se

**Turkey**  
Mavitek Ltd. Sti.  
www.mavitek.com

**UK**  
Miles Industrial Electronics Ltd  
www.milesie.co.uk