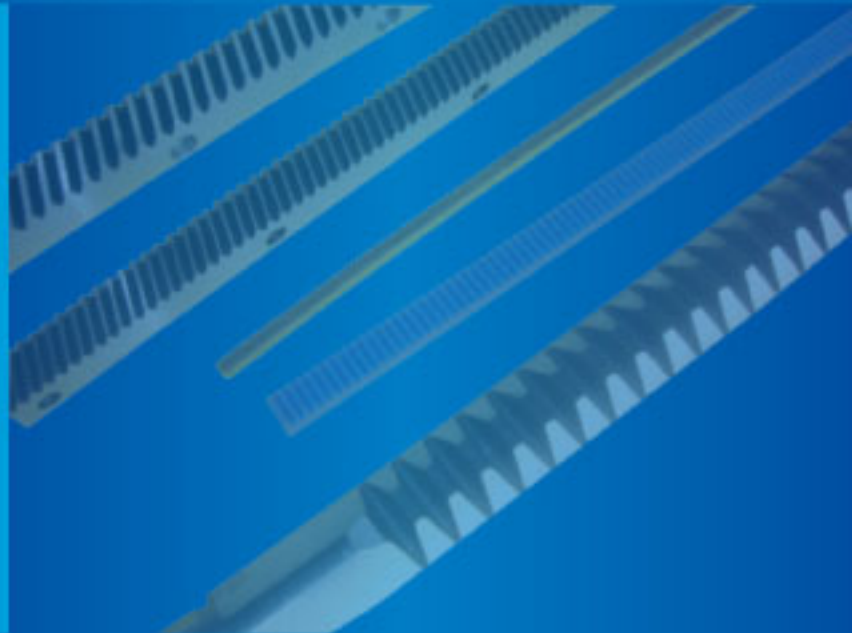




李科: 13509631435



原億昌機械股份有限公司

全球專業齒條製造商

YUAN YI CHANG Machinery Co., Ltd.

Global Professional Rack Manufacturer



三次元檢測儀器
Cubic Measuring Machine



滾齒機
Tooth Grinding Machine



齒面研磨機
Rack Processing Machine



公司簡介

Company Profile

公司沿革：

1980年	創立億昌機械廠，使用傳統銑床加工齒條。
1983年	使用步進馬達定位傳動加工。
1989年	遷移新廠。
1992年	改名為原億昌機械廠。
1993年	淘汰傳統機台，使用CNC齒條切削機。同時導入生產管理電腦資訊系統。
1993年	已增設至4台CNC設備、NC自動齒條壓直機
2006年	增設至1台CNC齒條成型研磨機，增設6台CNC齒條切削機
2009年	導入ISO9001 體系品質認證。增設一台CNC齒面研磨機

專業化經營：

●	全國唯一專業齒條加工製作佔全國生產工作母機市場60%。
●	工作母機包含車床、洗床、CNC、平面磨床等外銷到世界各地的運動生產機械。
●	豐富產業機械齒條生產經驗。塑膠業、包裝業、製紙業... 各種機械傳動所需齒條。

全面性技術：

●	齒條(排齒)承製、加工，成品加工。
●	模數M0.5~M12齒條。
●	可依客戶圖面、樣品訂做。

我們擁有專業的技術品質，優秀的產品精確度，多年的豐富經驗，良好的產業前景。歡迎世界各國廠商、貿易商合作生產。



生产设备

Products Entries

本公司產品製造過程均採用各項優良機具與專業技術，在嚴密的監督及品質管制之運作下，完成深具水準之產品。

●	本公司採專業齒條滾齒機,可加工 MP0.5~MP12 之大型齒條(排齒)，長度可一次加工二米長，為島內之最大型及最精密CNC齒條加工機。
●	NC齒條加工機，精密度JIS 3級~4級(日規)
●	刀具研磨機
●	齒條自動壓直機
●	硬度測試機 三次元檢驗儀器.....等，多種測量儀器

本公司於2006年增設一齒條研磨機，為客戶提供更精準、精密規格之產品。精度可達JIS1級(日規)歐規4級,可做齒面研磨,表面粗度0.6-0.8



产品用途

Purpose Services

●	本公司所加工生產之產品，可用於紡織業、產業機械、五金、工作母機、汽車業... 等所需的齒條上。
---	---



Introduction

Company Profile

HISTORY :

1980	Established Yi Chang Machinery specialized in rack manufacturing with traditional milling machines.
1983	Applied stepper motors to position, transmit, and process.
1989	Moved in to current factory.
1992	Renamed "Yuan Yi Chang Machinery Co., Ltd."
1993	Traditional machines were replaced of CNC gear cutting machines. Production system is computerized.
1993	6 CNC machines and NC automatic rack straightening machine built up.
2009	Transforming into ISO 9001 international quality certificate. One CNC Tooth Grinding Machine building up.

Professional Management :

●	Global profession rack manufacturer in Taiwan sharing 60% locally.
●	Main customers: manufacturers of lathing, drilling, cutting, and milling, grinding, printing machines; automatic robot systems, storage systems.
●	With 3 decade experiences and exporting to Europe, USA, Japan, Australia, South Africa, China and so on.

Diversity Technology:

●	Rack manufacturing and processing; finished product processing .
●	Rack modules from M0.5 to M12; precision can reach JIS Grade 1 to 4.
●	Customized by requested drawings.
We have professional technology, excellent quality, short delivery, competitive prices. Collaboration is welcome.	



Equipments

Products Entries

Entire manufacturing process of Yuan Yi Chang is carried out via all types of top machines and tools as well as specialized techniques, and strict quality control. We make excellent products.	
●	YYC racks ranging from MP0.5 to MP12, and single maximal processing length is 2 meters. The largest and the most accurate CNC rack processing machines in Taiwan.
●	NC rack processing machines of YYC precision is JIS Grade 3 to 4.
●	Cutting tools grinding machines
●	Automatic rack straightening machines
●	Various measuring instruments including hardness testers, and cubic measuring machine etc.
We built up one more tooth grinding machine in 2006 to provide our clients with more precise and more accurate products. Precision can reach JIS Grade 1 (Japan), DIN 5 (Europe). Tooth Ground can reach surface roughness to 0.6~0.8 um.	






Purpose

Purpose Services

●	YYC products can be applied for manufacturers of lathing, drilling, cutting, and milling, grinding, printing machines; automatic robot systems, storage systems.
---	--



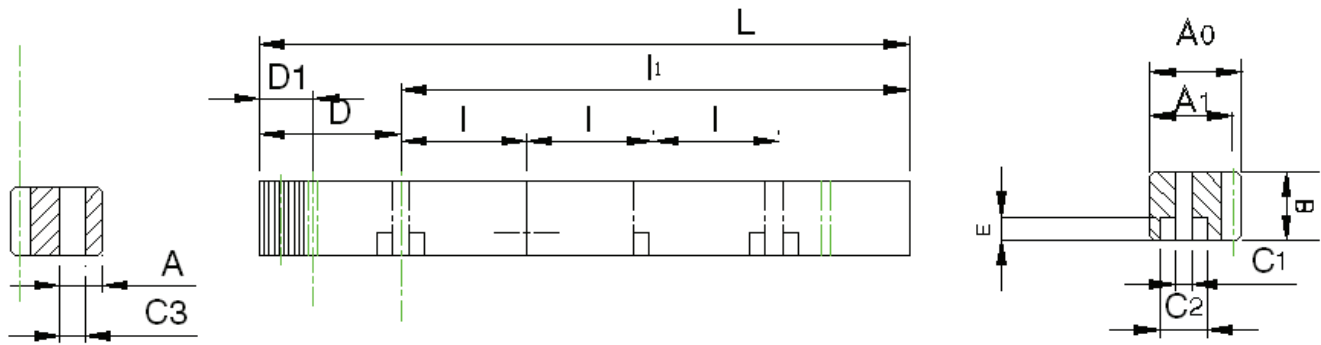
齒條型號說明 Rack Code Instruction

材料 Material	齒型 Rack Type	棒形 Shape	齒面處理 Treatment of Tooth	硬度處理 Hardness	模數 Module	長度 Length	鑽孔 Holes
C ↓ C=S45C C45	S ↓ S=直齒 Straight	T ↓ T=四角棒 Tetragon 	G ↓ G=研磨 Ground	H ↓ 高週波 Heat treatment	20 ↓ 1	50 ↓ 50=500mm	N ↓ N=無鑽孔 No Holes
M=SCM440 42crM04	H=斜齒 Helical 	R=圓棒 Round 	M=精銑 Milled	無高週波 Without treatment	1.5 2 2.5 3 4 5 6 8 10	10=1,000mm	



原億昌機械股份有限公司 YUAN YI CHANG Machinery Co., Ltd.

	型號 Code	材料 Material	齒型 Type	棒形 Shape	模數 Module	齒面處理 Treatment of Tooth	硬度處理 Hardness	精度等級 Precision Grade JIS	頁碼 Page
	CSTGH	S45C	直齒 Straight	四角棒 Tetragon	2,3,4,5,6,8,10	研磨 Ground	高週波 With H	1	1
	CSTMH	S45C	直齒 Straight	四角棒 Tetragon	2,3,4,5,6,8,10	精銑 Milled	高週波 With H	4	2
	CSTM	S45C	直齒 Straight	四角棒 Tetragon	2,3,4,5,6,8,10	精銑 Milled	無 Without H	4	3
	CHTGH	S45C	斜齒 Helical	四角棒 Tetragon	2,3,4,5,6,8,10	研磨 Ground	高週波 With H	1	4
	CHTMH	S45C	斜齒 Helical	四角棒 Tetragon	2,3,4,5,6,8,10	精銑 Milled	高週波 With H	4	5
	CHTM	S45C	斜齒 Helical	四角棒 Tetragon	2,3,4,5,6,8,10	精銑 Milled	無 Without H	4	6
	CSRMH	S45C	直齒 Straight	圓棒 Round	1,1.5,2,2.5,3,4,5	精銑 Milled	高週波 With H	4	7
	CSRM	S45C	直齒 Straight	圓棒 Round	1,1.5,2,2.5,3,4,5	精銑 Milled	無 Without H	4	8
	MSTGH	SCM440	直齒 Straight	四角棒 Tetragon	2,3,4,5,6,8,10	研磨 Ground	高週波 With H	1	9
	MSTMH	SCM440	直齒 Straight	四角棒 Tetragon	2,3,4,5,6,8,10	精銑 Milled	高週波 With H	4	10
	MSTM	SCM440	直齒 Straight	四角棒 Tetragon	2,3,4,5,6,8,10	精銑 Milled	無 Without H	4	11
	MHTGH	SCM440	斜齒 Helical	四角棒 Tetragon	2,3,4,5,6,8,10	研磨 Ground	高週波 With H	1	12
	MHTMH	SCM440	斜齒 Helical	四角棒 Tetragon	2,3,4,5,6,8,10	精銑 Milled	高週波 With H	4	13
	MHTM	SCM440	斜齒 Helical	四角棒 Tetragon	2,3,4,5,6,8,10	精銑 Milled	無 Without H	4	14
	MSRMH	SCM440	直齒 Straight	圓棒 Round	1,1.5,2,2.5,3,4,5	精銑 Milled	高週波 With H	4	15
	MSRM	SCM440	直齒 Straight	圓棒 Round	1,1.5,2,2.5,3,4,5	精銑 Milled	無 Without H	4	16



單位/Dimension: mm

型號 Code	模數 Module	L	齒數 Tooth No.	B	A0	A1	D	l	孔數 Hole No.	A	C1	C2	E	D1	l1	C3	總齒距誤差 Pitch Error /300mm
CSTGH 20 50	2	502.70	80	24	24	22	62.8	125.66	4	8	7	11	7	31.3	440.1	5.7	0.023
CSTGH 20 10	2	1005.30	160	24	24	22	62.8	125.66	8	8	7	11	7	31.3	942.7	5.7	0.023
CSTGH 30 50	3	508.90	54	29	29	26	63.6	127.23	4	9	10	15	9	34.4	440.1	7.7	0.025
CSTGH 30 10	3	1017.90	108	29	29	26	63.6	127.23	8	9	10	15	9	34.4	949.1	7.7	0.025
CSTGH 40 50	4	502.70	40	39	39	35	62.8	125.66	4	12	10	15	9	37.5	427.7	7.7	0.028
CSTGH 40 10	4	1005.30	80	39	39	35	62.8	125.66	8	12	10	15	9	37.5	930.3	7.7	0.028
CSTGH 50 50	5	502.60	32	49	39	34	62.8	125.66	4	12	14	20	13	30.1	442.4	11.7	0.028
CSTGH 50 10	5	1005.30	64	49	39	34	62.8	125.66	8	12	14	20	13	30.1	945	11.7	0.028
CSTGH 60 50	6	508.90	27	59	49	43	63.6	127.23	4	16	18	26	17	31.4	446.1	15.7	0.034
CSTGH 60 10	6	1017.80	54	59	49	43	63.6	127.23	8	16	18	26	17	31.4	955.0	15.7	0.034
CSTGH 80 50	8	502.65	20	79	79	71	62.8	125.66	4	25	22	33	21	26.6	449.5	19.7	0.034
CSTGH 80 10	8	1005.30	40	79	79	71	62.8	125.66	8	25	22	33	21	26.6	952	19.7	0.034
CSTGH 10 10	10	1005.30	32	99	99	89	62.83	125.66	8	32	33	48	32	125.7	753.96	19.7	0.034

製程說明：

精度等級：(JIS一級) 6h25

材料：(S45C中碳鋼) C45

齒型：直齒

齒面處理：研磨

硬度處理：熱處理採用高週波後;硬度為45~50°度

四面研磨：有

壓力角：20度

Manufacturing Description:

Precision Grade: (JIS Grade 1)6h25

Material: (S45C Medium Carbon Steel)C45

Type: Straight Rack

Treatment of Teeth: Ground

Hardness: Heat treatment by High Frequency; 45~50 degree.

Sides Ground: Included.

Pressure Angle: 20 degree.

*亦供應無鑽孔的齒條，請於型號後加註"N"，如CSTGH2050N。

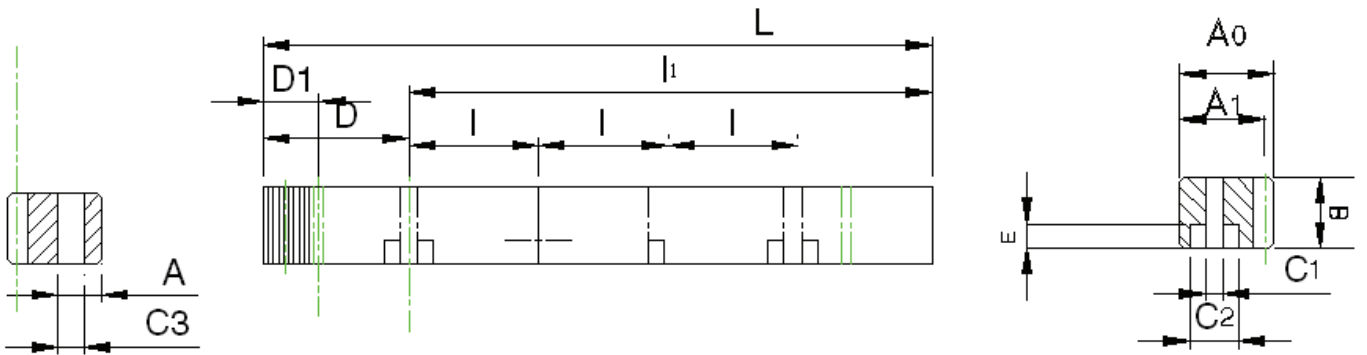
*不同尺寸與材質可以依照圖面客製化。

*總齒距誤差:每300mm齒距累積誤差的最大值。

*Racks without holes are also available. Note "N" in the end of code number. i.e. CSTGH2050N.

*Other Dimensions/Materials could be customized by drawings.

*Pitch Error: total pitch error per 300 mm.



單位/Dimension: mm

型號 Code	模數 Module	L	齒數 Teeth No.	B	A0	A1	D	l	孔數 HoLE No.	A	C1	C2	E	D1	l1	C3	總齒距誤差 Pitch Error /300mm
CSTMH 20 50	2	502.70	80	24	24	22	62.8	125.66	4	8	7	11	7	31.3	440.1	5.7	0.066
CSTMH 20 10	2	1005.30	160	24	24	22	62.8	125.66	8	8	7	11	7	31.3	942.7	5.7	0.066
CSTMH 30 50	3	508.90	54	29	29	26	63.6	127.23	4	9	10	15	9	34.4	440.1	7.7	0.072
CSTMH 30 10	3	1017.90	108	29	29	26	63.6	127.23	8	9	10	15	9	34.4	949.1	7.7	0.072
CSTMH 40 50	4	502.70	40	39	39	35	62.8	125.66	4	12	10	15	9	37.5	427.7	7.7	0.072
CSTMH 40 10	4	1005.30	80	39	39	35	62.8	125.66	8	12	10	15	9	37.5	930.3	7.7	0.072
CSTMH 50 50	5	502.60	32	49	39	34	62.8	125.66	4	12	14	20	13	30.1	442.4	11.7	0.081
CSTMH 50 10	5	1005.30	64	49	39	34	62.8	125.66	8	12	14	20	13	30.1	945	11.7	0.081
CSTMH 60 50	6	508.90	27	59	49	43	63.6	127.23	4	16	18	26	17	31.4	446.1	15.7	0.081
CSTMH 60 10	6	1017.80	54	59	49	43	63.6	127.23	8	16	18	26	17	31.4	955.0	15.7	0.081
CSTMH 80 50	8	502.65	20	79	79	71	62.8	125.66	4	25	22	33	21	26.6	449.5	19.7	0.096
CSTMH 80 10	8	1005.30	40	79	79	71	62.8	125.66	8	25	22	33	21	26.6	952	19.7	0.096
CSTMH 10 10	10	1005.30	32	99	99	89	62.83	125.66	8	32	33	48	32	125.7	753.96	19.7	0.096

製程說明：

精度等級：(JIS四級)9e27

材料：(S45C中碳鋼) C45

齒型：直齒

齒面處理：精銑

硬度處理：熱處理採用高週波後;硬度為 45~50度

四面研磨：無

壓力角：20度

Manufacturing Description:

Precision Grade: (JIS Grade 4) 9e27

Material: (S45C Medium Carbon Steel) C45

Type: Straight Rack

Treatment of Teeth: Milled

Hardness: Heat treatment by High Frequency; 45~50 degree

Sides Ground: not included.

Pressure Angle: 20 degree.

*亦供應無鑽孔的齒條，請於型號後加註"N"，如CSTMH2050N。

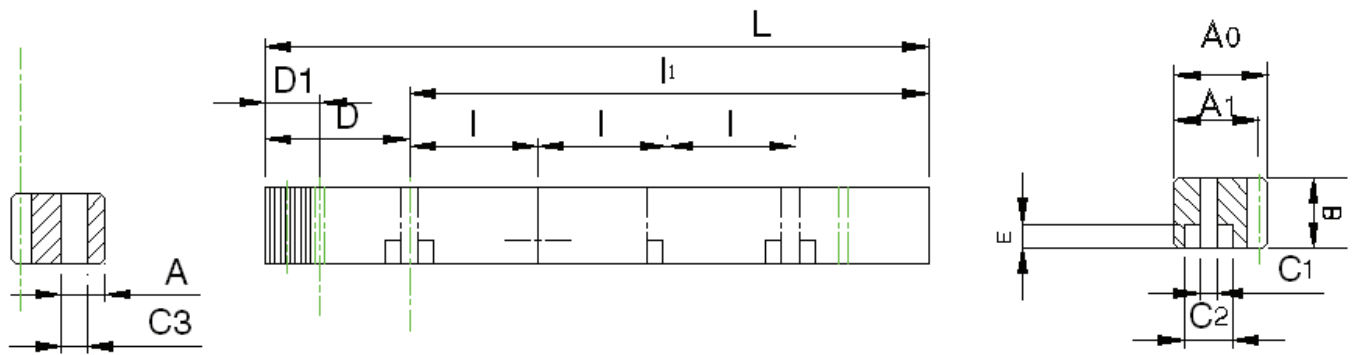
*不同尺寸與材質可以依照圖面客製化。

*總齒距誤差:每300mm齒距累積誤差的最高值。

*Racks without holes are also available. Note "N" in the end of code number. i.e. CSTMH2050N.

*Other Dimensions/Materials could be customized by drawings.

*Pitch Error: total pitch error per 300 mm.



單位/Dimension: mm

型號 Code	模數 Module	L	齒數 Teeth No.	B	A0	A1	D	I	孔數 HOLE No.	A	C1	C2	E	D1	I1	C3	總齒距誤 差 Pitch Error /300mm
CSTM 20 50	2	502.70	80	24	24	22	62.8	125.66	4	8	7	11	7	31.3	440.1	5.7	0.066
CSTM 20 10	2	1005.30	160	24	24	22	62.8	125.66	8	8	7	11	7	31.3	942.7	5.7	0.066
CSTM 30 50	3	508.90	54	29	29	26	63.6	127.23	4	9	10	15	9	34.4	440.1	7.7	0.072
CSTM 30 10	3	1017.90	108	29	29	26	63.6	127.23	8	9	10	15	9	34.4	949.1	7.7	0.072
CSTM 40 50	4	502.70	40	39	39	35	62.8	125.66	4	12	10	15	9	37.5	427.7	7.7	0.072
CSTM 40 10	4	1005.30	80	39	39	35	62.8	125.66	8	12	10	15	9	37.5	930.3	7.7	0.072
CSTM 50 50	5	502.60	32	49	39	34	62.8	125.66	4	12	14	20	13	30.1	442.4	11.7	0.081
CSTM 50 10	5	1005.30	64	49	39	34	62.8	125.66	8	12	14	20	13	30.1	945	11.7	0.081
CSTM 60 50	6	508.90	27	59	49	43	63.6	127.23	4	16	18	26	17	31.4	446.1	15.7	0.081
CSTM 60 10	6	1017.80	54	59	49	43	63.6	127.23	8	16	18	26	17	31.4	955.0	15.7	0.081
CSTM 80 50	8	502.65	20	79	79	71	62.8	125.66	4	25	22	33	21	26.6	449.5	19.7	0.096
CSTM 80 10	8	1005.30	40	79	79	71	62.8	125.66	8	25	22	33	21	26.6	952	19.7	0.096
CSTM 10 10	10	1005.30	32	99	99	89	62.83	125.66	8	32	33	48	32	125.7	753.96	19.7	0.096

製程說明：

精度等級：(JIS四級)9e27

材料：(S45C中碳鋼)C45

齒型：直齒

齒面處理：精銑

硬度處理：無

四面研磨：無

壓力角：20度

Manufacturing Description:

Precision Grade: (JIS Grade 4) 9e27

Material: (S45C Medium Carbon Steel)C45

Type: Straight Rack

Treatment of Teeth: Milled

Hardness: No heat treatment.

Sides Ground: not included.

Pressure Angle: 20 degree

*亦供應無鑽孔的齒條，請於型號後加註"N"，如CSTM2050N。

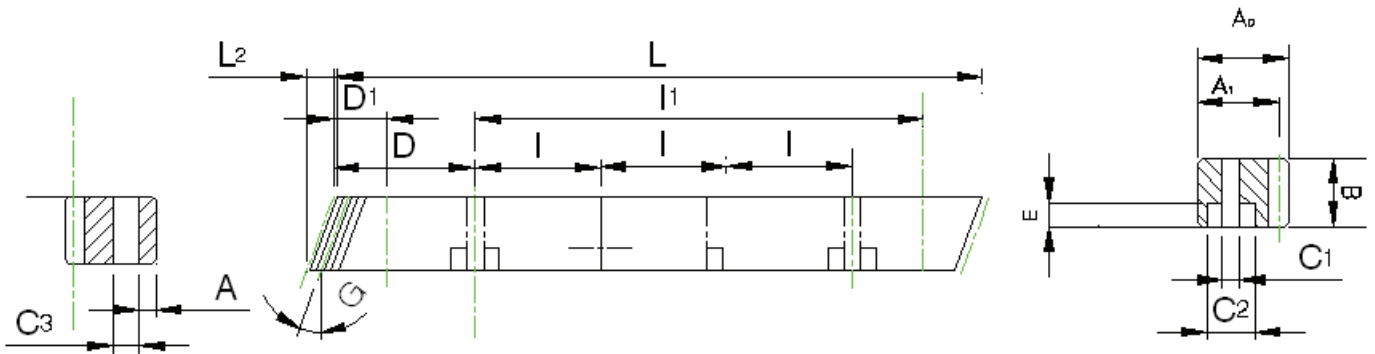
*不同尺寸與材質可以依照圖面客製化。

*總齒距誤差:每300mm齒距累積誤差的最大值。

*Racks without holes are also available. Note "N" in the end of code number. i.e. CSTM2050N.

*Other Dimensions/Materials could be customized by drawings.

*Pitch Error: total pitch error per 300 mm.



單位/Dimension: mm

型號 Code	模數 Module	L	L2	齒數 Tooth No.	B	A0	A1	D	I	孔數 HOLE No.	A	C1	C2	E	D1	I1	C3	總齒距誤差 Pitch Error /300mm
CHTGH 02 50	2	500.00	8.5	75	24	24	22	62.5	125	4	8	7	11	7	31.7	436.6	5.7	0.023
CHTGH 02 10	2	1000.00	8.5	150	24	24	22	62.5	125	8	8	7	11	7	31.7	936.6	5.7	0.023
CHTGH 03 50	3	500.00	10.3	50	29	29	26	62.5	125	4	9	10	15	9	35	430.0	7.7	0.025
CHTGH 03 10	3	1000.00	10.3	100	29	29	26	62.5	125	8	9	10	15	9	35	930.0	7.7	0.025
CHTGH 04 50	4	506.67	13.8	38	39	39	35	62.5	125	4	12	10	15	9	33.3	433.0	7.7	0.028
CHTGH 04 10	4	1000.00	13.8	75	39	39	35	62.5	125	8	12	10	15	9	33.3	933.4	7.7	0.028
CHTGH 05 50	5	500.00	17.4	30	49	39	34	62.5	125	4	12	14	20	13	37.5	425.0	11.7	0.028
CHTGH 05 10	5	1000.00	17.4	60	49	39	34	62.5	125	8	12	14	20	13	37.5	925.0	11.7	0.028
CHTGH 06 50	6	500.00	20.9	25	59	49	43	62.5	125	4	16	18	26	17	37.5	425.0	15.7	0.034
CHTGH 06 10	6	1000.00	20.9	50	59	49	43	62.5	125	8	16	18	26	17	37.5	925.0	15.7	0.034
CHTGH 08 50	8	480.00	28.0	18	79	79	71	60	120	4	25	22	33	21	120	240.0	19.7	0.034
CHTGH 08 10	8	960.00	28.0	36	79	79	71	60	120	8	25	22	33	21	120	720.0	19.7	0.034
CHTGH 10 10	10	1000.00	35.11	30	99	99	89	62.5	125	8	32	33	48	32	125	750.0	19.7	0.034

製程說明：

精度等級：(JIS一級)6h25

材料：(S45C中碳鋼)C45

齒型：斜齒

齒面處理：研磨

硬度處理：熱處理採用高週波後，硬度可達 45~50度

四面研磨：有

右旋角:19°31'42"

壓力角：20度

Manufacturing Description:

Precision Grade: (JIS Grade 1) 6h25

Material: (S45C Medium Carbon Steel)C45

Type: Helical Rack

Treatment of Teeth: Ground

Hardness: Heat treatment by High Frequency; 45~50 degree

Sides Ground: Included.

Right Hand Angle: 19°31'42"

Pressure Angle: 20 degree

*亦供應無鑽孔的齒條，請於型號後加註"N"，如CHTGH2050N。

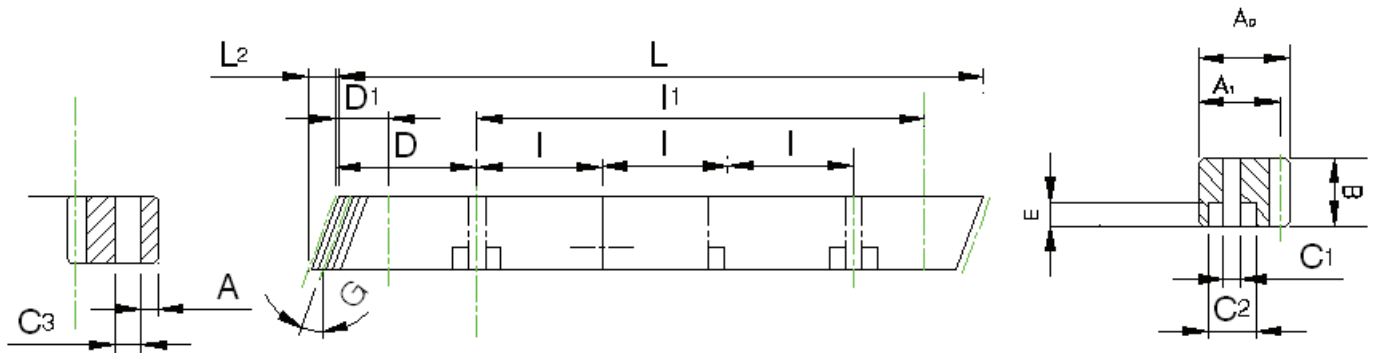
*不同尺寸與材質可以依照圖面客製化。

*總齒距誤差:為每300mm齒距累積誤差的最大值。

*Racks without holes are also available. Note "N" in the end of code number. i.e. CHTGH2050N.

*Other Dimensions/Materials could be customized by drawings.

*Pitch Error: total pitch error per 300 mm.



單位/Dimension: mm

型號 Code	模數 Module	L	L2	齒數 Tooth No.	B	A0	A1	D	l	孔數 Hole No.	A	C1	C2	E	D1	l1	C3	總齒距誤差 Pitch Error /300mm
CHTMH 02 50	2	500.00	8.5	75	24	24	22	62.5	125	4	8	7	11	7	31.7	436.6	5.7	0.066
CHTMH 02 10	2	1000.00	8.5	150	24	24	22	62.5	125	8	8	7	11	7	31.7	936.6	5.7	0.066
CHTMH 03 50	3	500.00	10.3	50	29	29	26	62.5	125	4	9	10	15	9	35	430.0	7.7	0.072
CHTMH 03 10	3	1000.00	10.3	100	29	29	26	62.5	125	8	9	10	15	9	35	930.0	7.7	0.072
CHTMH 04 50	4	506.67	13.8	38	39	39	35	62.5	125	4	12	10	15	9	33.3	433.0	7.7	0.072
CHTMH 04 10	4	1000.00	13.8	75	39	39	35	62.5	125	8	12	10	15	9	33.3	933.4	7.7	0.072
CHTMH 05 50	5	500.00	17.4	30	49	39	34	62.5	125	4	12	14	20	13	37.5	425.0	11.7	0.081
CHTMH 05 10	5	1000.00	17.4	60	49	39	34	62.5	125	8	12	14	20	13	37.5	925.0	11.7	0.081
CHTMH 06 50	6	500.00	20.9	25	59	49	43	62.5	125	4	16	18	26	17	37.5	425.0	15.7	0.081
CHTMH 06 10	6	1000.00	20.9	50	59	49	43	62.5	125	8	16	18	26	17	37.5	925.0	15.7	0.081
CHTMH 08 50	8	480.00	28.0	18	79	79	71	60	120	4	25	22	33	21	120	240.0	19.7	0.096
CHTMH 08 10	8	960.00	28.0	36	79	79	71	60	120	8	25	22	33	21	120	720.0	19.7	0.096
CHTMH 10 10	10	1000.00	35.11	30	99	99	89	62.5	125	8	32	33	48	32	125	750.0	19.7	0.096

製程說明：

精度等級：(JIS四級)9e27

材料：(S45C中碳鋼)C45

齒型：斜齒

齒面處理：精銑

硬度處理：熱處理採高週波後，硬度為45~50度

四面研磨：無

右旋角：19°31'42"

壓力角：20度

Manufacturing Description:

Precision Grade: (JIS Grade 4) 9e27

Material: (S45C Medium Carbon Steel)C45

Type: Helical Rack

Treatment of Teeth: Milled

Hardness: Heat treatment by High Frequency; 45~50 degree.

Sides Ground: not included.

Right Hand Angle: 19°31'42"

Pressure Angle: 20 degree.

*亦供應無鑽孔的齒條，請於型號後加註"N"，如CHTMH2050N。

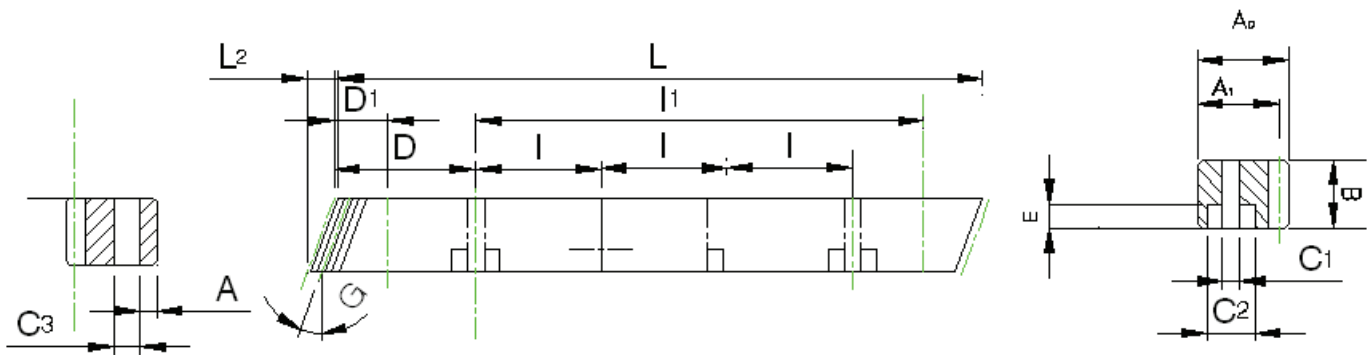
*不同尺寸與材質以可依照圖面客製化。

*總齒距誤差:每300mm齒距累積誤差的極大值。

*Racks without holes are also available. Note "N" in the end of code number. i.e. CHTMH2050N.

*Other Dimensions/Materials could be customized by drawings.

*Pitch Error: total pitch error per 300 mm.



單位/Dimension: mm

型號 Code	模數 Module	L	L2	齒數 Tooth No.	B	A0	A1	D	l	孔數 Hole No.	A	C1	C2	E	D1	l1	C3	總齒距誤差 Pitch Error /300mm
CHTM 02 50	2	500.00	8.5	75	24	24	22	62.5	125	4	8	7	11	7	31.7	436.6	5.7	0.066
CHTM 02 10	2	1000.00	8.5	150	24	24	22	62.5	125	8	8	7	11	7	31.7	936.6	5.7	0.066
CHTM 03 50	3	500.00	10.3	50	29	29	26	62.5	125	4	9	10	15	9	35	430.0	7.7	0.072
CHTM 03 10	3	1000.00	10.3	100	29	29	26	62.5	125	8	9	10	15	9	35	930.0	7.7	0.072
CHTM 04 50	4	506.67	13.8	38	39	39	35	62.5	125	4	12	10	15	9	33.3	433.0	7.7	0.072
CHTM 04 10	4	1000.00	13.8	75	39	39	35	62.5	125	8	12	10	15	9	33.3	933.4	7.7	0.072
CHTM 05 50	5	500.00	17.4	30	49	49	34	62.5	125	4	12	14	20	13	37.5	425.0	11.7	0.081
CHTM 05 10	5	1000.00	17.4	60	49	49	34	62.5	125	8	12	14	20	13	37.5	925.0	11.7	0.081
CHTM 06 50	6	500.00	20.9	25	59	59	43	62.5	125	4	16	18	26	17	37.5	425.0	15.7	0.081
CHTM 06 10	6	1000.00	20.9	50	59	59	43	62.5	125	8	16	18	26	17	37.5	925.0	15.7	0.081
CHTM 08 50	8	480.00	28.0	18	79	79	71	60	120	4	25	22	33	21	120	240.0	19.7	0.096
CHTM 08 10	8	960.00	28.0	36	79	79	71	60	120	8	25	22	33	21	120	720.0	19.7	0.096
CHTM 10 10	10	1000.00	35.11	30	99	99	89	62.5	125	8	32	33	48	32	125	750.0	19.7	0.096

製程說明：

精度等級：(JIS四級)9e27

材料：(S45C中碳鋼)C45

齒型：斜齒

齒面處理：精銑

硬度處理：無

四面研磨：無

右旋角：19°31'42"

壓力角：20度

Manufacturing Description:

Precision Grade: (JIS Grade 4) 9e27

Material: (S45C Medium Carbon Steel)C45

Type: Helical Rack

Treatment of Teeth: Milled

Hardness: No heat treatment.

Sides Ground: not included.

Right Hand Angle: 19°31'42"

Pressure Angle: 20 degree.

*亦供應無鑽孔的齒條，請於型號後加註"N"，如CHTM2050N。

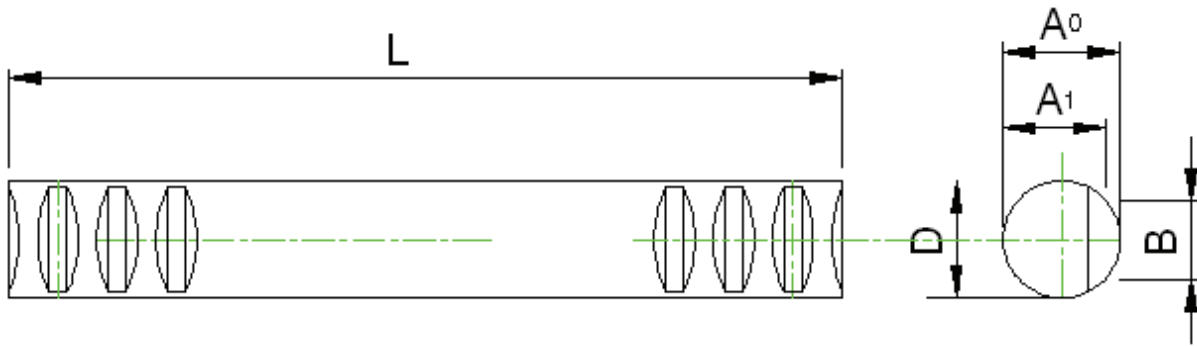
*不同尺寸與材質可以依照圖面客製化。

*總齒距誤差:每300mm齒距累積誤差的最高值。

*Racks without holes are also available. Note "N" in the end of code number. i.e. CHTM2050N.

*Other Dimensions/Materials could be customized by drawings.

*Pitch Error: total pitch error per 300 mm.



單位/Dimension: mm

型號 Code	模數 Module	L	齒數 Tooth No.	D	B	A ₀	A ₁	總齒距誤差 Pitch Error /300mm
CSRMH 10 50	1	499.50	159	15	7.5	15	14	0.062
CSRMH 10 10	1	999.00	318	15	7.5	15	14	0.062
CSRMH 15 50	1.5	499.50	106	17	9.6	17	15.5	0.062
CSRMH 15 10	1.5	999.00	212	17	9.6	17	15.5	0.062
CSRMH 20 50	2	502.70	80	20	12	20	18	0.066
CSRMH 20 10	2	999.00	159	20	12	20	18	0.066
CSRMH 25 50	2.5	502.70	64	25	15	25	22.5	0.066
CSRMH 25 10	2.5	997.50	127	25	15	25	22.5	0.066
CSRMH 30 50	3	499.50	53	30	18	30	27	0.072
CSRMH 30 10	3	999.00	106	30	18	30	27	0.072
CSRMH 40 50	4	502.60	40	40	24	40	36	0.072
CSRMH 40 10	4	1005.30	80	40	24	40	36	0.072
CSRMH 50 50	5	502.60	32	50	30	50	45	0.081
CSRMH 50 10	5	1005.30	64	50	30	50	45	0.081

製程說明：

精度等級：(JIS四級)9e27

材料：(S45C中碳鋼)C45

齒型：直齒圓棒

齒面處理：精銑

硬度處理：熱處理採用高週波後，硬度可達45~50度

四面研磨：無

壓力角：20度

Manufacturing Description:

Precision Grade: (JIS Grade 4) 9e27

Material: (S45C Medium Carbon Steel)C45

Type: Straight Round Rack

Treatment of Teeth: Milled

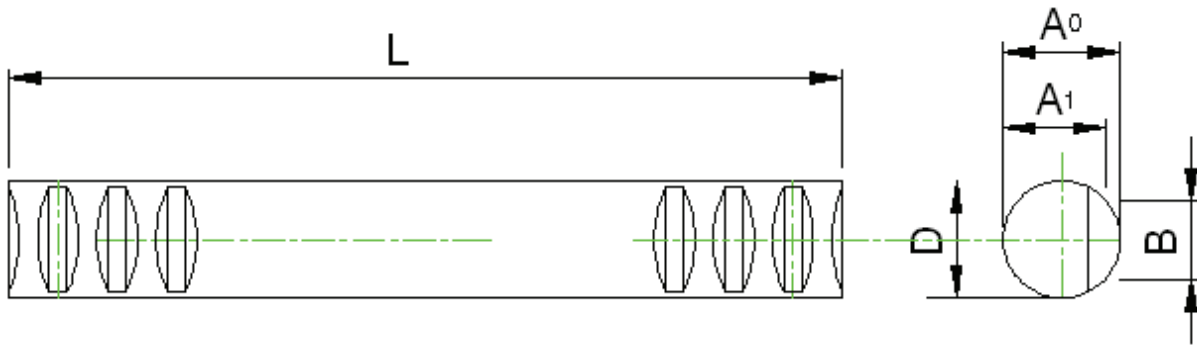
Hardness: Heat treatment by High Frequency; 45~50 degree.

Sides Ground: not included.

Pressure Angle: 20 degree.

*不同尺寸與材質可以依照圖面客製化。
*總齒距誤差:每300mm齒距累積誤差的最大值。

*Other Dimensions/Materials could be customized by drawings.
*Pitch Error: total pitch error per 300 mm.



單位/Dimension: mm

型號 Code	模數 Module	L	齒數 Tooth No.	D	B	A ₀	A ₁	總齒距誤差 Pitch Error /300mm
CSRM 10 50	1	499.50	159	15	7.5	15	14	0.062
CSRM 10 10	1	999.00	318	15	7.5	15	14	0.062
CSRM 15 50	1.5	499.50	106	17	9.6	17	15.5	0.062
CSRM 15 10	1.5	999.00	212	17	9.6	17	15.5	0.062
CSRM 20 50	2	502.70	80	20	12	20	18	0.066
CSRM 20 10	2	999.00	159	20	12	20	18	0.066
CSRM 25 50	2.5	502.70	64	25	15	25	22.5	0.066
CSRM 25 10	2.5	997.50	127	25	15	25	22.5	0.066
CSRM 30 50	3	499.50	53	30	18	30	27	0.072
CSRM 30 10	3	999.00	106	30	18	30	27	0.072
CSRM 40 50	4	502.60	40	40	24	40	36	0.072
CSRM 40 10	4	1005.30	80	40	24	40	36	0.072
CSRM 50 50	5	502.60	32	50	30	50	45	0.081
CSRM 50 10	5	1005.30	64	50	30	50	45	0.081

製程說明：

精度等級：(JIS四級)9e27

材料：(S45C中碳鋼)C45

齒型：直齒圓棒

齒面處理：精銑

硬度處理：無

四面研磨：無

壓力角：20度

Manufacturing Description:

Precision Grade: (JIS Grade 4) 9e27

Material: (S45C Medium Carbon Steel)C45

Type: Straight Round Rack

Treatment of Teeth: Milled

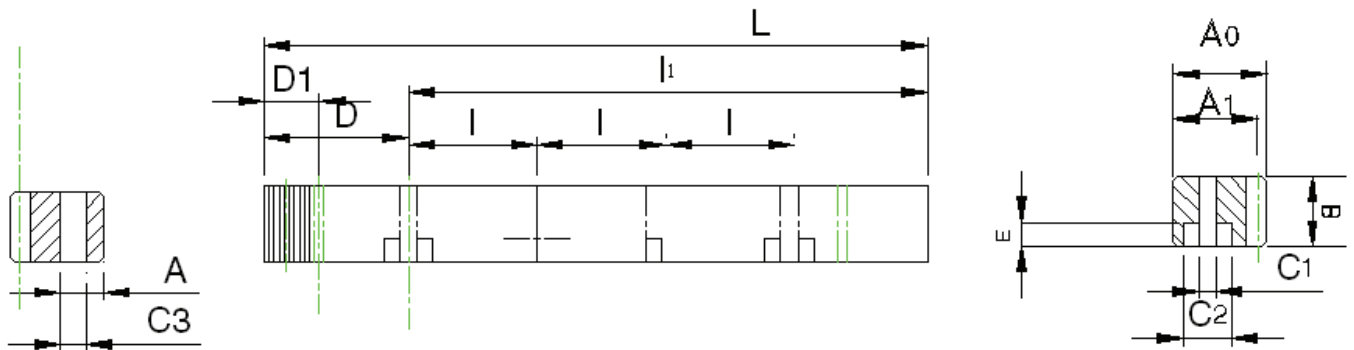
Hardness: No Heat treatment.

Sides Ground: not included.

Pressure Angle: 20 degree.

*不同尺寸與材質可以依照圖面客製化。
*總齒距誤差:每300mm齒距累積誤差的極大值。

*Other Dimensions/Materials could be customized by drawings.
*Pitch Error: total pitch error per 300 mm.



單位/Dimension: mm

型號 Code	模數 Module	L	齒數 Tooth No.	B	A ₀	A ₁	D	l	孔數 Hole No.	A	C ₁	C ₂	E	D ₁	l ₁	C ₃	總齒距誤差 Pitch Error /300mm
MSTGH 20 50	2	502.70	80	24	24	22	62.8	125.66	4	8	7	11	7	31.3	440.1	5.7	0.023
MSTGH 20 10	2	1005.30	160	24	24	22	62.8	125.66	8	8	7	11	7	31.3	942.7	5.7	0.023
MSTGH 30 50	3	508.90	54	29	29	26	63.6	127.23	4	9	10	15	9	34.4	440.1	7.7	0.025
MSTGH 30 10	3	1017.90	108	29	29	26	63.6	127.23	8	9	10	15	9	34.4	949.1	7.7	0.025
MSTGH 40 50	4	502.70	40	39	39	35	62.8	125.66	4	12	10	15	9	37.5	427.7	7.7	0.028
MSTGH 40 10	4	1005.30	80	39	39	35	62.8	125.66	8	12	10	15	9	37.5	930.3	7.7	0.028
MSTGH 50 50	5	502.60	32	49	39	34	62.8	125.66	4	12	14	20	13	30.1	442.4	11.7	0.028
MSTGH 50 10	5	1005.30	64	49	39	34	62.8	125.66	8	12	14	20	13	30.1	945	11.7	0.028
MSTGH 60 50	6	508.90	27	59	49	43	63.6	127.23	4	16	18	26	17	31.4	446.1	15.7	0.034
MSTGH 60 10	6	1017.80	54	59	49	43	63.6	127.23	8	16	18	26	17	31.4	955.0	15.7	0.034
MSTGH 80 50	8	502.65	20	79	79	71	62.8	125.66	4	25	22	33	21	26.6	449.5	19.7	0.034
MSTGH 80 10	8	1005.30	40	79	79	71	62.8	125.66	8	25	22	33	21	26.6	952	19.7	0.034
MSTGH 10 10	10	1005.30	32	99	99	89	62.83	125.66	8	32	33	48	32	125.7	753.96	19.7	0.034

製程說明:

精度等級: (JIS 一級)6h25

材料: (SCM440 鉻鉬合金鋼) 42CrM04

齒型: 直齒

齒面處理: 研磨

硬度處理: 熱處理採用高週波後, 硬度可達55~60度

四面研磨: 有

壓力角: 20度

Manufacturing Description:

Precision Grade: (JIS Grade 1) 6h25

Material: (SCM440 Chromium Molybdenum Alloy Steel)42CrM04

Type: Straight Rack

Treatment of Teeth: Ground

Hardness: Heat treatment by High Frequency; 55~60 degree.

Sides Ground: Included.

Pressure Angle: 20 degree.

*亦供應無鑽孔的齒條, 請於型號後加註"N", 如MSTGH2050N.

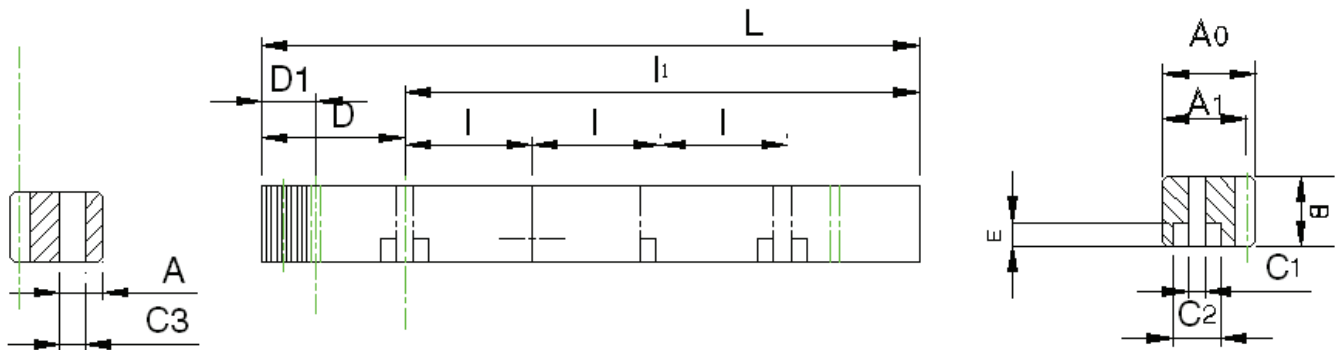
*不同尺寸與材質可以依照圖面客製化。

*總齒距誤差: 為每300mm齒距累積誤差的最大值。

*Racks without holes are also available. Note "N" in the end of code number. i.e. MSTGH2050N.

*Other Dimensions/Materials could be customized by drawings.

*Pitch Error: total pitch error per 300 mm.



單位/Dimension: mm

型號 Code	模數 Module	L	齒數 Tooth No.	B	A ₀	A ₁	D	l	孔數 Hole No.	A	C ₁	C ₂	E	D ₁	l ₁	C ₃	總齒距誤差 Pitch Error /300mm
MSTMH 20 50	2	502.70	80	24	24	22	62.8	125.66	4	8	7	11	7	31.3	440.1	5.7	0.066
MSTMH 20 10	2	1005.30	160	24	24	22	62.8	125.66	8	8	7	11	7	31.3	942.7	5.7	0.066
MSTMH 30 50	3	508.90	54	29	29	26	63.6	127.23	4	9	10	15	9	34.4	440.1	7.7	0.072
MSTMH 30 10	3	1017.90	108	29	29	26	63.6	127.23	8	9	10	15	9	34.4	949.1	7.7	0.072
MSTMH 40 50	4	502.70	40	39	39	35	62.8	125.66	4	12	10	15	9	37.5	427.7	7.7	0.072
MSTMH 40 10	4	1005.30	80	39	39	35	62.8	125.66	8	12	10	15	9	37.5	930.3	7.7	0.072
MSTMH 50 50	5	502.60	32	49	39	34	62.8	125.66	4	12	14	20	13	30.1	442.4	11.7	0.081
MSTMH 50 10	5	1005.30	64	49	39	34	62.8	125.66	8	12	14	20	13	30.1	945	11.7	0.081
MSTMH 60 50	6	508.90	27	59	49	43	63.6	127.23	4	16	18	26	17	31.4	446.1	15.7	0.081
MSTMH 60 10	6	1017.80	54	59	49	43	63.6	127.23	8	16	18	26	17	31.4	955.0	15.7	0.081
MSTMH 80 50	8	502.65	20	79	79	71	62.8	125.66	4	25	22	33	21	26.6	449.5	19.7	0.096
MSTMH 80 10	8	1005.30	40	79	79	71	62.8	125.66	8	25	22	33	21	26.6	952	19.7	0.096
MSTMH 10 10	10	1005.30	32	99	99	89	62.83	125.66	8	32	33	48	32	125.7	753.96	19.7	0.096

製程說明：

精度等級：(JIS 四級)9e27

材料：(SCM440 鉻鉬合金鋼) 42CrM04

齒型：直齒

齒面處理：精銑

硬度處理：熱處理採用高週波後，硬度可達55~60度

四面研磨：無

壓力角：20度

Manufacturing Description:

Precision Grade: (JIS Grade 4)9e27

Material: (SCM440 Chromium Molybdenum Alloy Steel)42CrM04

Type: Straight Rack

Treatment of Teeth: Milled.

Hardness: Heat treatment by High Frequency; 55~60 degree.

Sides Ground: not included.

Pressure Angle: 20 degree.

*亦供應無鑽孔的齒條，請於型號後加註"N"，如MSTMH2050N。

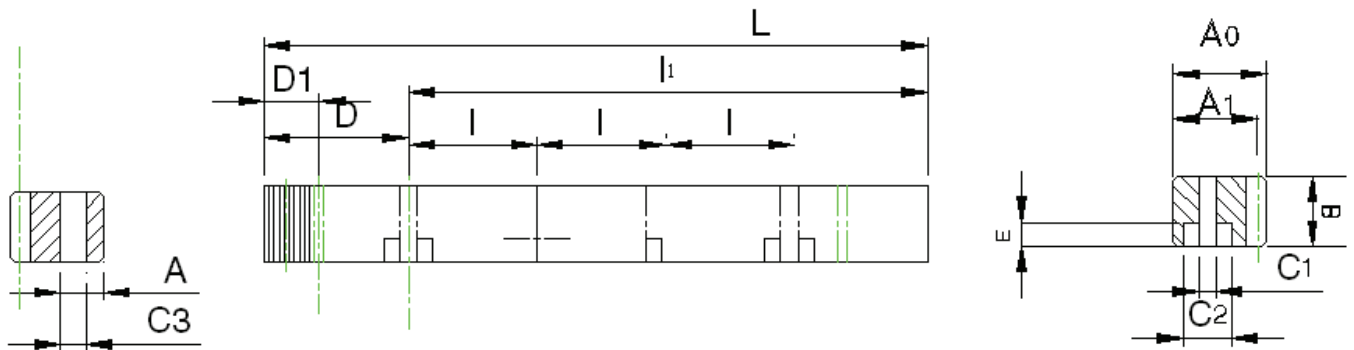
*不同尺寸與材質可以依照圖面客製化。

*總齒距誤差:每300mm齒距累積誤差的數最大值。

*Racks without holes are also available. Note "N" in the end of code number. i.e. MSTMH2050N.

*Other Dimensions/Materials could be customized by drawings.

*Pitch Error: total pitch error per 300 mm.



單位/Dimension: mm

型號 Code	模數 Module	L	齒數 Tooth No.	B	A ₀	A ₁	D	l	孔數 Hole No.	A	C ₁	C ₂	E	D ₁	l ₁	C ₃	總齒距誤差 Pitch Error /300mm
MSTM 20 50	2	502.70	80	24	24	22	62.8	125.66	4	8	7	11	7	31.3	440.1	5.7	0.066
MSTM 20 10	2	1005.30	160	24	24	22	62.8	125.66	8	8	7	11	7	31.3	942.7	5.7	0.066
MSTM 30 50	3	508.90	54	29	29	26	63.6	127.23	4	9	10	15	9	34.4	440.1	7.7	0.072
MSTM 30 10	3	1017.90	108	29	29	26	63.6	127.23	8	9	10	15	9	34.4	949.1	7.7	0.072
MSTM 40 50	4	502.70	40	39	39	35	62.8	125.66	4	12	10	15	9	37.5	427.7	7.7	0.072
MSTM 40 10	4	1005.30	80	39	39	35	62.8	125.66	8	12	10	15	9	37.5	930.3	7.7	0.072
MSTM 50 50	5	502.60	32	49	39	34	62.8	125.66	4	12	14	20	13	30.1	442.4	11.7	0.081
MSTM 50 10	5	1005.30	64	49	39	34	62.8	125.66	8	12	14	20	13	30.1	945	11.7	0.081
MSTM 60 50	6	508.90	27	59	49	43	63.6	127.23	4	16	18	26	17	31.4	446.1	15.7	0.081
MSTM 60 10	6	1017.80	54	59	49	43	63.6	127.23	8	16	18	26	17	31.4	955.0	15.7	0.081
MSTM 80 50	8	502.65	20	79	79	71	62.8	125.66	4	25	22	33	21	26.6	449.5	19.7	0.096
MSTM 80 10	8	1005.30	40	79	79	71	62.8	125.66	8	25	22	33	21	26.6	952	19.7	0.096
MSTM 10 10	10	1005.30	32	99	99	89	62.83	125.66	8	32	33	48	32	125.7	753.96	19.7	0.096

製程說明：

精度等級：(JIS 四級)9e27

材料：(SCM440 鉻鉬合金鋼) 42CrM04

齒型：直齒

齒面處理：精銑

硬度處理：無

四面研磨：無

壓力角：20度

Manufacturing Description:

Precision Grade: (JIS Grade 4)9e27

Material: (SCM440 Chromium Molybdenum Alloy Steel)42CrM04

Type: Straight Rack

Treatment of Teeth: Milled.

Hardness: No Heat treatment.

Sides Ground: not included.

Pressure Angle: 20 degree

*亦供應無鑽孔的齒條，請於型號後加註"N"，如MSTM2050N。

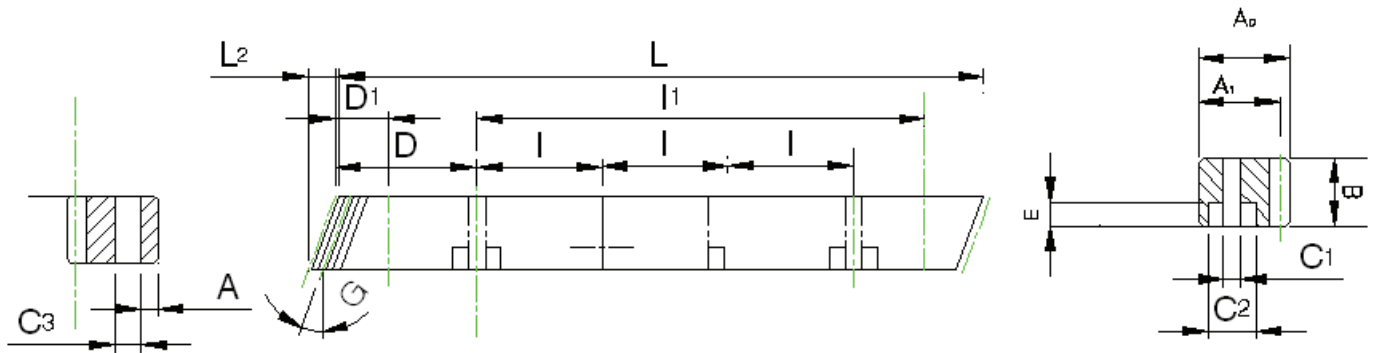
*不同尺寸與材質以可依照圖面客製化。

*總齒距誤差:每300mm齒距累積誤差的最高值。

*Racks without holes are also available. Note "N" in the end of code number. i.e. MSTM2050N.

*Other Dimensions/Materials could be customized by drawings.

*Pitch Error: total pitch error per 300 mm.



單位/Dimension: mm

型號 Code	模數 Module	L	L2	齒數 Tooth No.	B	A0	A1	D	I	孔數 Hole No.	A	C1	C2	E	D1	I1	C3	總齒距誤差 Pitch Error /300mm
MHTM 02 50	2	500.00	8.5	75	24	24	22	62.5	125	4	8	7	11	7	31.7	436.6	5.7	0.066
MHTM 02 10	2	1000.00	8.5	150	24	24	22	62.5	125	8	8	7	11	7	31.7	936.6	5.7	0.066
MHTM 03 50	3	500.00	10.3	50	29	29	26	62.5	125	4	9	10	15	9	35	430.0	7.7	0.072
MHTM 03 10	3	1000.00	10.3	100	29	29	26	62.5	125	8	9	10	15	9	35	930.0	7.7	0.072
MHTM 04 50	4	506.67	13.8	38	39	39	35	62.5	125	4	12	10	15	9	33.3	433.0	7.7	0.072
MHTM 04 10	4	1000.00	13.8	75	39	39	35	62.5	125	8	12	10	15	9	33.3	933.4	7.7	0.072
MHTM 05 50	5	500.00	17.4	30	49	39	34	62.5	125	4	12	14	20	13	37.5	425.0	11.7	0.081
MHTM 05 10	5	1000.00	17.4	60	49	39	34	62.5	125	8	12	14	20	13	37.5	925.0	11.7	0.081
MHTM 06 50	6	500.00	20.9	25	59	49	43	62.5	125	4	16	18	26	17	37.5	425.0	15.7	0.081
MHTM 06 10	6	1000.00	20.9	50	59	49	43	62.5	125	8	16	18	26	17	37.5	925.0	15.7	0.081
MHTM 08 50	8	480.00	28.0	18	79	79	71	60	120	4	25	22	33	21	120	240.0	19.7	0.096
MHTM 08 10	8	960.00	28.0	36	79	79	71	60	120	8	25	22	33	21	120	720.0	19.7	0.096
MHTM 10 10	10	1000.00	35.11	30	99	99	89	62.5	125	8	32	33	48	32	125	750.0	19.7	0.096

製程說明：

精度等級：(JIS 四級)9e27

材料：(SCM440 鉻鉬合金鋼) 42CrM04

齒型：斜齒

齒面處理：精銑

硬度處理：無

四面研磨：無

右旋角：19°31'42"

壓力角：20度

Manufacturing Description:

Precision Grade: (JIS Grade 4)9e27

Material: (SCM440 Chromium Molybdenum Alloy Steel)42CrM04

Type: Helical Rack

Treatment of Teeth: Milled

Hardness: No Heat treatment.

Sides Ground: not included.

Right Hand Angle: 19°31'42"

Pressure Angle: 20 degree.

*亦供應無鑽孔的齒條，請於型號後加註"N"，如MHTM2050N。

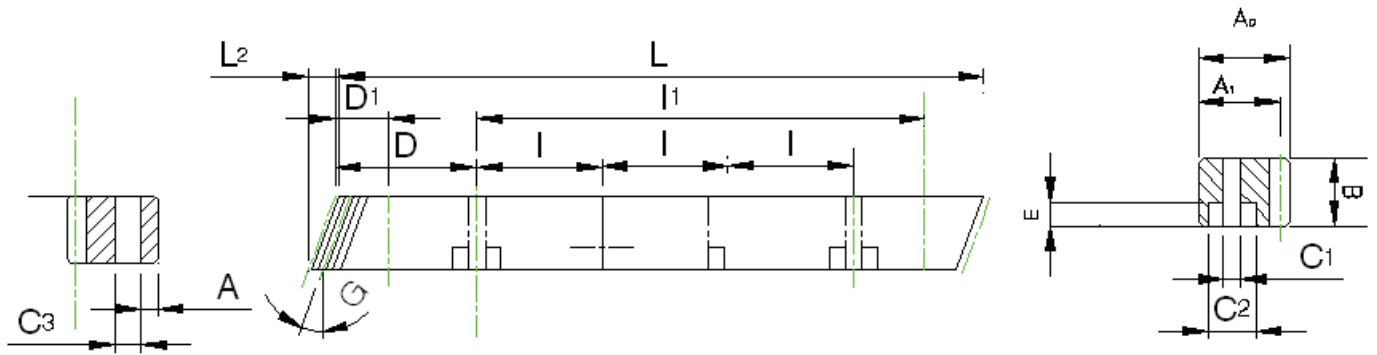
*不同尺寸與材質可以依照圖面客製化。

*總齒距誤差:為每300mm齒距累積誤差的最大值。

*Racks without holes are also available. Note "N" in the end of code number. i.e. MHTM2050N.

*Other Dimensions/Materials could be customized by drawings.

*Pitch Error: total pitch error per 300 mm.



單位/Dimension: mm

型號 Code	模數 Module	L	L2	齒數 Tooth No.	B	A0	A1	D	l	孔數 Hole No.	A	C1	C2	E	D1	l1	C3	總齒距誤差 Pitch Error /300mm
MHTMH 02 50	2	500.00	8.5	75	24	24	22	62.5	125	4	8	7	11	7	31.7	436.6	5.7	0.066
MHTMH 02 10	2	1000.00	8.5	150	24	24	22	62.5	125	8	8	7	11	7	31.7	936.6	5.7	0.066
MHTMH 03 50	3	500.00	10.3	50	29	29	26	62.5	125	4	9	10	15	9	35	430.0	7.7	0.072
MHTMH 03 10	3	1000.00	10.3	100	29	29	26	62.5	125	8	9	10	15	9	35	930.0	7.7	0.072
MHTMH 04 50	4	506.67	13.8	38	39	39	35	62.5	125	4	12	10	15	9	33.3	433.0	7.7	0.072
MHTMH 04 10	4	1000.00	13.8	75	39	39	35	62.5	125	8	12	10	15	9	33.3	933.4	7.7	0.072
MHTMH 05 50	5	500.00	17.4	30	49	39	34	62.5	125	4	12	14	20	13	37.5	425.0	11.7	0.081
MHTMH 05 10	5	1000.00	17.4	60	49	39	34	62.5	125	8	12	14	20	13	37.5	925.0	11.7	0.081
MHTMH 06 50	6	500.00	20.9	25	59	49	43	62.5	125	4	16	18	26	17	37.5	425.0	15.7	0.081
MHTMH 06 10	6	1000.00	20.9	50	59	49	43	62.5	125	8	16	18	26	17	37.5	925.0	15.7	0.081
MHTMH 08 50	8	480.00	28.0	18	79	79	71	60	120	4	25	22	33	21	120	240.0	19.7	0.096
MHTMH 08 10	8	960.00	28.0	36	79	79	71	60	120	8	25	22	33	21	120	720.0	19.7	0.096
MHTMH 10 10	10	1000.00	35.11	30	99	99	89	62.5	125	8	32	33	48	32	125	750.0	19.7	0.096

製程說明：

精度等級：(JIS 四級)9e27

材料：(SCM440 鉻鉬合金鋼) 42CrM04

齒型：斜齒

齒面處理：精銑

硬度處理：熱處理採用高週波後，硬度可達55~60度

四面研磨：無

右旋角：19°31'42"

壓力角：20度

Manufacturing Description:

Precision Grade: (JIS Grade 4)9e27

Material: (SCM440 Chromium Molybdenum Alloy Steel)42CrM04

Type: Helical Rack

Treatment of Teeth: Milled

Hardness: Heat treatment by High Frequency; 55~60 degree.

Sides Ground: not included.

Right Hand Angle: 19°31'42"

Pressure Angle: 20 degree.

*亦供應無鑽孔的齒條，請於型號後加註"N"，如MHTMH2050N。

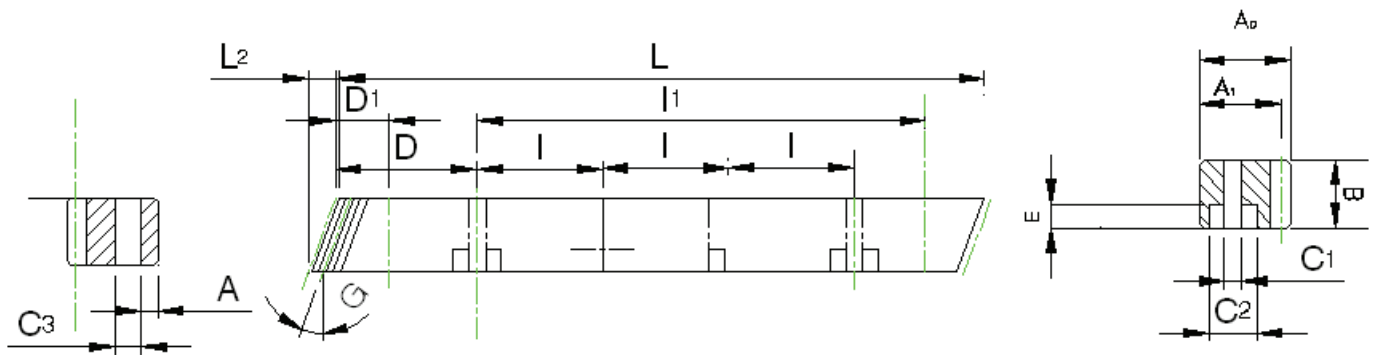
*不同尺寸與材質可以依照圖面客製化。

*總齒距誤差:為每300mm齒距累積誤差的最大值。

*Racks without holes are also available. Note "N" in the end of code number. i.e. MHTMH2050N.

*Other Dimensions/Materials could be customized by drawings.

*Pitch Error: total pitch error per 300 mm.



單位/Dimension: mm

型號 Code	模數 Module	L	L2	齒數 Tooth No.	B	A0	A1	D	l	孔數 Hole No.	A	C1	C2	E	D1	l1	C3	總齒距誤差 Pitch Error /300mm
MHTM 02 50	2	500.00	8.5	75	24	24	22	62.5	125	4	8	7	11	7	31.7	436.6	5.7	0.066
MHTM 02 10	2	1000.00	8.5	150	24	24	22	62.5	125	8	8	7	11	7	31.7	936.6	5.7	0.066
MHTM 03 50	3	500.00	10.3	50	29	29	26	62.5	125	4	9	10	15	9	35	430.0	7.7	0.072
MHTM 03 10	3	1000.00	10.3	100	29	29	26	62.5	125	8	9	10	15	9	35	930.0	7.7	0.072
MHTM 04 50	4	506.67	13.8	38	39	39	35	62.5	125	4	12	10	15	9	33.3	433.0	7.7	0.072
MHTM 04 10	4	1000.00	13.8	75	39	39	35	62.5	125	8	12	10	15	9	33.3	933.4	7.7	0.072
MHTM 05 50	5	500.00	17.4	30	49	39	34	62.5	125	4	12	14	20	13	37.5	425.0	11.7	0.081
MHTM 05 10	5	1000.00	17.4	60	49	39	34	62.5	125	8	12	14	20	13	37.5	925.0	11.7	0.081
MHTM 06 50	6	500.00	20.9	25	59	49	43	62.5	125	4	16	18	26	17	37.5	425.0	15.7	0.081
MHTM 06 10	6	1000.00	20.9	50	59	49	43	62.5	125	8	16	18	26	17	37.5	925.0	15.7	0.081
MHTM 08 50	8	480.00	28.0	18	79	79	71	60	120	4	25	22	33	21	120	240.0	19.7	0.096
MHTM 08 10	8	960.00	28.0	36	79	79	71	60	120	8	25	22	33	21	120	720.0	19.7	0.096
MHTM 10 10	10	1000.00	35.11	30	99	99	89	62.5	125	8	32	33	48	32	125	750.0	19.7	0.096

製程說明：

精度等級：(JIS 四級)9e27

材料：(SCM440 鉻鉬合金鋼) 42CrM04

齒型：斜齒

齒面處理：精銑

硬度處理：無

四面研磨：無

右旋角：19°31'42"

壓力角：20度

Manufacturing Description:

Precision Grade: (JIS Grade 4)9e27

Material: (SCM440 Chromium Molybdenum Alloy Steel)42CrM04

Type: Helical Rack

Treatment of Teeth: Milled

Hardness: No Heat treatment.

Sides Ground: not included.

Right Hand Angle: 19°31'42"

Pressure Angle: 20 degree.

*亦供應無鑽孔的齒條，請於型號後加註"N"，如MHTM2050N。

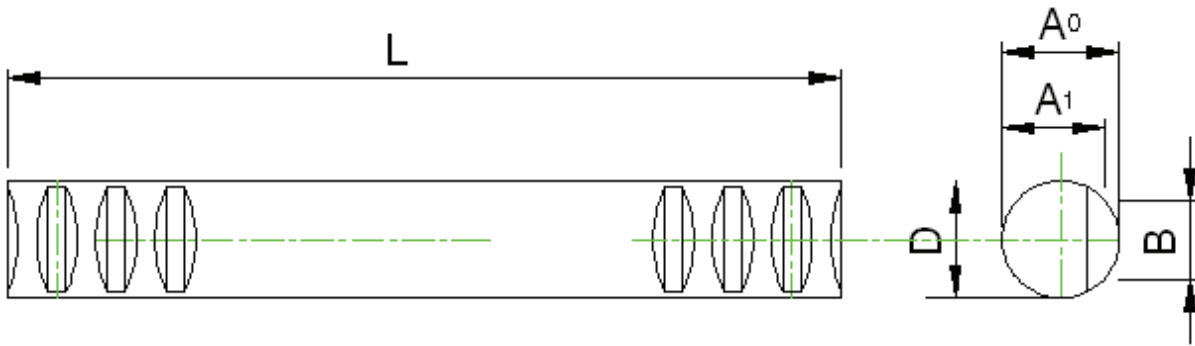
*不同尺寸與材質可以依照圖面客製化。

*總齒距誤差：為每300mm齒距累積誤差的最大值。

*Racks without holes are also available. Note "N" in the end of code number. i.e. MHTM2050N.

*Other Dimensions/Materials could be customized by drawings.

*Pitch Error: total pitch error per 300 mm.



單位/Dimension: mm

型號 Code	模數 Module	L	齒數 Tooth No.	D	B	A0	A1	總齒距誤差 Pitch Error /300mm
MSRMH 10 50	1	499.50	159	15	7.5	15	14	0.062
MSRMH 10 10	1	999.00	318	15	7.5	15	14	0.062
MSRMH 15 50	1.5	499.50	106	17	9.6	17	15.5	0.062
MSRMH 15 10	1.5	999.00	212	17	9.6	17	15.5	0.062
MSRMH 20 50	2	502.70	80	20	12	20	18	0.066
MSRMH 20 10	2	999.00	159	20	12	20	18	0.066
MSRMH 25 50	2.5	502.70	64	25	15	25	22.5	0.066
MSRMH 25 10	2.5	997.50	127	25	15	25	22.5	0.066
MSRMH 30 50	3	499.50	53	30	18	30	27	0.072
MSRMH 30 10	3	999.00	106	30	18	30	27	0.072
MSRMH 40 50	4	502.60	40	40	24	40	36	0.072
MSRMH 40 10	4	1005.30	80	40	24	40	36	0.072
MSRMH 50 50	5	502.60	32	50	30	50	45	0.081
MSRMH 50 10	5	1005.30	64	50	30	50	45	0.081

製程說明：

精度等級：(JIS 四級)9e27

材料：(SCM440 鉻鉬合金鋼) 42CrM04

齒型：直齒圓棒

齒面處理：精銑

硬度處理：熱處理採用高週波後，硬度可達 55~60度

四面研磨：無

壓力角：20度

Manufacturing Description:

Precision Grade: (JIS Grade 4)9e27

Material: (SCM440 Chromium Molybdenum Alloy Steel)42CrM04

Type: Straight Round Rack

Treatment of Teeth: Milled

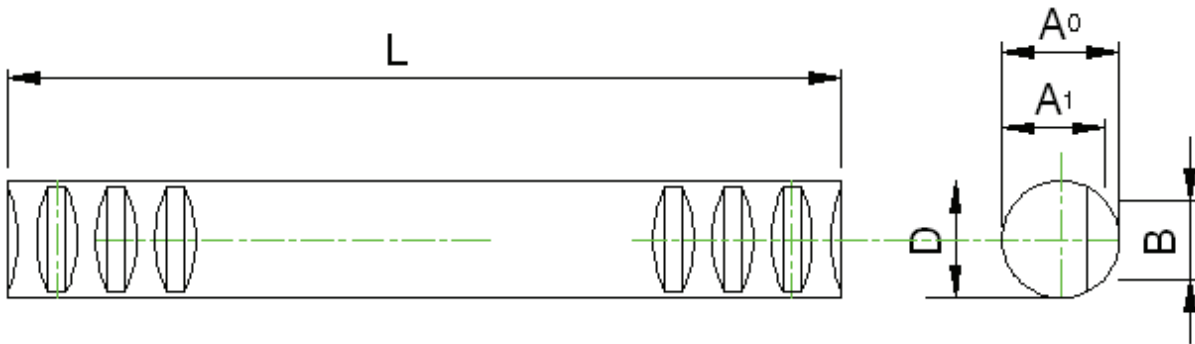
Hardness: Heat treatment by High Frequency; 55~60 degree.

Sides Ground: not included.

Pressure Angle: 20 degree.

*不同尺寸與材質可以依照圖面客製化。
*總齒距誤差:為每300mm齒距累積誤差的極大值。

*Other Dimensions/Materials could be customized by drawings.
*Pitch Error: total pitch error per 300 mm.



單位/Dimension: mm

型號 Code	模數 Module	L	齒數 Tooth No.	D	B	A ₀	A ₁	總齒距誤差 Pitch Error /300mm
MSRM 10 50	1	499.50	159	15	7.5	15	14	0.062
MSRM 10 10	1	999.00	318	15	7.5	15	14	0.062
MSRM 15 50	1.5	499.50	106	17	9.6	17	15.5	0.062
MSRM 15 10	1.5	999.00	212	17	9.6	17	15.5	0.062
MSRM 20 50	2	502.70	80	20	12	20	18	0.066
MSRM 20 10	2	999.00	159	20	12	20	18	0.066
MSRM 25 50	2.5	502.70	64	25	15	25	22.5	0.066
MSRM 25 10	2.5	997.50	127	25	15	25	22.5	0.066
MSRM 30 50	3	499.50	53	30	18	30	27	0.072
MSRM 30 10	3	999.00	106	30	18	30	27	0.072
MSRM 40 50	4	502.60	40	40	24	40	36	0.072
MSRM 40 10	4	1005.30	80	40	24	40	36	0.072
MSRM 50 50	5	502.60	32	50	30	50	45	0.081
MSRM 50 10	5	1005.30	64	50	30	50	45	0.081

製程說明：

精度等級：(JIS 四級)9e27

材料：(SCM440 鉻鉬合金鋼) 42CrM04

齒型：直齒圓棒

齒面處理：精銑

硬度處理：無

四面研磨：無

壓力角：20度

Manufacturing Description:

Precision Grade: (JIS Grade 4)9e27

Material: (SCM440 Chromium Molybdenum Alloy Steel)42CrM04

Type: Straight Round Rack

Treatment of Teeth: Milled

Hardness: No Heat treatment.

Sides Ground: not included.

Pressure Angle: 20 degree.

*不同尺寸與材質可以依照圖面客製化。

*總齒距誤差:為每300mm齒距累積誤差的最大值。

*Other Dimensions/Materials could be customized by drawings.

*Pitch Error: total pitch error per 300 mm.



40152 台灣台中市東區振興路 280 巷 67 弄 17 號
No. 17, Alley 67, Lane 280, Zhenxing Rd.,
E. Dist. Taichung 40152, Taiwan
Tel: 00886-4-22125756
Fax: 00886-4-22125866
E-mail: service@yuan-yi-chang.com.tw
[Http://www.yuan-yi-chang.com.tw](http://www.yuan-yi-chang.com.tw)