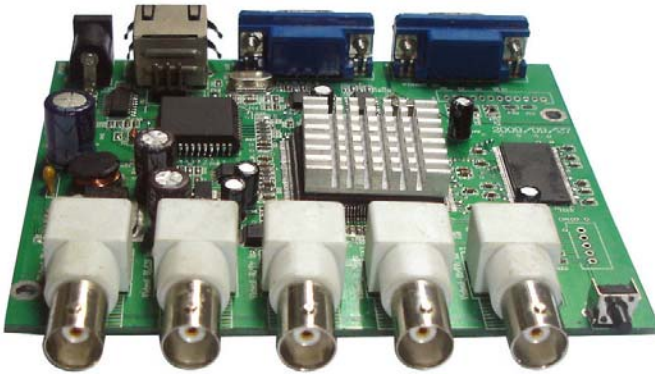


RGB, CGA, EGA to VGA Converter (MODEL IVC-808)



Operation Manual

**VERSION 3.0
2010-08**

IVC-808 is industrial video converter, can converter any signal CGA, EGA or VGA to standard VGA signal. The converter can operate easily by debug tool.

IVC-808 has 15 pin D-sub and 5 BNC RGB connectors. Output is standard VGA signal.

Quick reference for IVC-808:

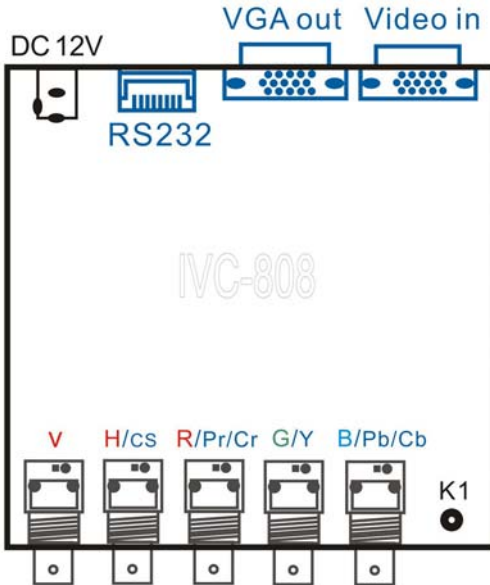
Input Signal	Type	CGA, EGA, RGB, RGB Sog, RGBS, RGBHV, YUV, Mono/Colour
	Interface	15 PIN, 3 PIN, 5 PIN, 6 PIN, 7 PIN, 9 PIN, 20 PIN, 24 PIN, 25 PIN, BNC port...
	Parameter	0.75-3.5Vpp 75 ohm
Output Signal	Type	Standard VGA 1024*768/60hz
	Interface	Standard 15Pin D-SUB
Power	DC 5-12V 1.0A / Consumption- 5.0W maximum	

IVC-808 Size: 117mm*115mm*29mm

IVC-808 Replacement Monitor Example:

- | | |
|---|--------------------------------------|
| AB monitor replacement , | AgieCharmilles monitor replacement, |
| AMF monitor replacement, | Bearing Milling monitor replacement, |
| Computer Lo monitor replacement, | Edger monitor replacement, |
| Fanuc CNC-40 monitor replacement, | FanucT42 monitor replacement, |
| GEM80 monitor replacement, | Milling monitor replacement, |
| Monitor Mixer replacement, | NEC monitor replacement, |
| NUM760 monitor replacement, | OLYMPUS CV-240 monitor replacement, |
| PCB Drilling Machine monitor replacement, | Planeta monitor replacement, |
| Photoelectric detector monitor replacement, | Velocimeter monitor replacement |
| Power Monitoring replacement, | Press monitor replacement, |
| Radar monitor replacement, | SYS2 monitor replacement, |
| Tester monitor replacement, | Thickness monitor replacement, |
| Ship Radar monitor replacement | |

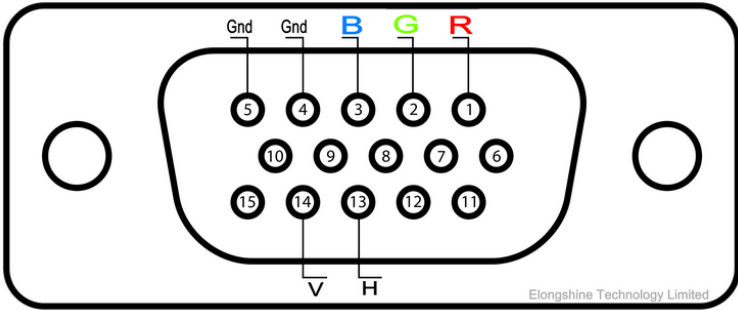
Quick reference for IVC-808 interface



- DC 12V: Power Supply, DC 5-12V/1.0A.
VGA OUT: Standard VGA output, 1024*768/60hz
Video in: 15 Pin D-SUB input, channel 2
RS232: Debug interface serial controller through the interface can be adjusted on the circuit boards and programming (RUN LED).
V: Vertical Scanning Frequency (channel 1).
H/CS: Horizontal Scanning Frequency, or composite sync (channel 1).
R/Pr: Red signal, or the color of the PR (channel 1).
G/Y: Green signal, or chromatic aberration of Y (channel 1).
B/Pb: Blue signal, or chromatic aberration of Pb (channel 1).
K1: Switch button, you can switch the signal input channel, and switch the input signal format.

Note: 15 pin D-SUB(CH2) and BNC(CH1) input signal, you can choose one of them.

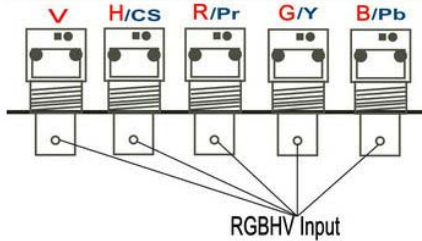
15 Pin D-SUB Video In Reference



Note:

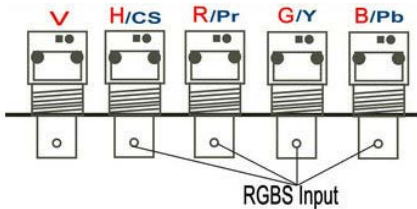
1=Red, 2=Green, 3=Blue, 13=Horizontal, 14=Vertical
 4, 5, 6, 7, 8, 10, 11 = Gnd

Connection Diagram



RGBHV Signal Input

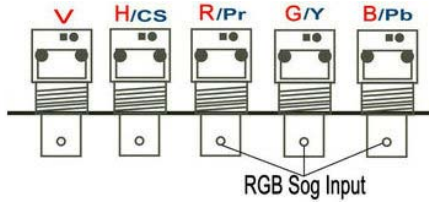
5 BNC port, Connection R, G, B, H, V. / Monochrome Connection G, H, V



RGBS Signal Input

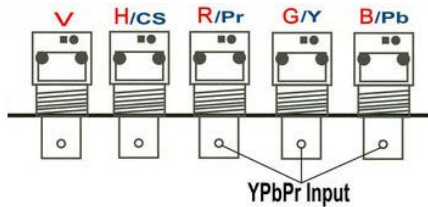
4 BNC port, Connection R, G, B, S. / Monochrome Connection G, S

Connection Diagram



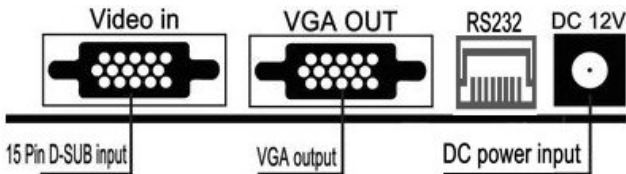
RGB Sog Signal Input

3 BNC port, Connection R、 G、 B. Monochrome Connection G



YPbPr Signal Input

3 BNC port, Connection Pb、 Y、 Pr. Monochrome Connection Y



15PIN, 9 PIN, 3 PIN, 6 PIN, 7 PIN, 14 PIN, 20 PIN, 24 PIN, 25 PIN Signal Input
Select RGBHV wire connection, Please follow the 15Pin D-SUB Reference.

Note: 15 pin D-SUB(CH2) and BNC(CH1) input signal, you can choose one of them.

IVC-808 Button Description:

CH1 RGBHV **First Menu**

480i-60 **Second Menu**

1. K1 key function: K1 key functions, menu for two, the first level for the channel selection and signal source selection.
2. Such as: 1 channel RGB, 1-channel RGBS.
Resolution of two menu options for input, such as 480I, 1080P.
The use of techniques, when click K1, a menu will appear, OSD prompted for the flash, when the OSD when prompted for the flash can be to switch the input channel K1. If the input channels are required to use, please wait a few seconds after the flash, the system automatically to enter the secondary menu, and similarly, when the flash can be switched by K1, such as 480i, 480p, has the right to debug, please wait , the system will automatically exit the menu.
3. Using the skills, if choosing the right input channel, such as 1-channel RGBS, can cut off the power, restart, the system will automatically identify the signal formats, such as the 720P.

For example CGA/EGA

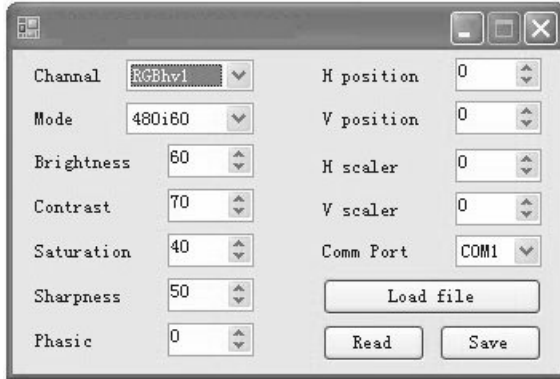
CGA/EGA Connection 15 PIN D-SUB Video in(CH2):

Pin 1 – R (red)
Pin 2 – G (green)
Pin 3 – B (blue)
Pin 4 – (ground)
Pin 13 – V (vertical sync)
Pin 14 – H (horizontal sync)
Mode:RGBHV CH 2

CGA/EGA Connection BNC port(CH1):

BNC 1 – R (red)
BNC 2 – G (green)
BNC 3 – B (blue)
BNC 4 – V (vertical sync)
BNC 5 – H (horizontal sync)
Mode:RGBHV CH 1

Control Software Description



RS232: For serial debugging software, please download software, you can tune up and down about the size, color, contrast, brightness, etc. If you set more than one machine, as long as there is a good one, all others can be copy, if the wrong tune, you can restore the factory settings. We will provide products in each article 1 debug serial line, on behalf of users.

The corresponding video format definition line field:

Define	Horizontal Scanning Frequency	Vertical Scanning Frequency
480i-60	15.750khz	60hz
576i-50	15.625khz	50hz
1080i-50	28.125khz	50hz
1080i-60	33.750khz	60hz
480p-60	31.500khz	60hz
576p-50	31.250khz	50hz
720p-50	37.500khz	50hz
720p-60	45.000khz	60hz
1080p-50	56.250khz	50hz
1080p-60	67.500khz	60hz