

SBSB-ESH-2T 称重传感器, 【SBSB-2TSS ESH 称重传感器】

广州南创四部陈工【020-28989905 ★ 15622375007】

产品品牌: 美国Transcell称重传感器

产品类型: 美国Transcell悬臂梁称重传感器 美国传力称重传感器

产品型号: SBSB-ESH-2T, SBSB-2TSS ESH



Transcell SBSB称重传感器技术参数

Specifications

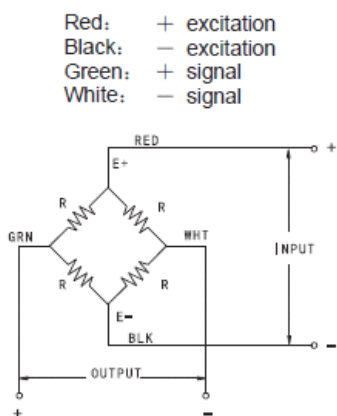
Rated Output	3.0mV/V \pm 0.1%
Zero Balance	\pm 1% of rated output
Creep after 30 minutes	\pm 0.02% of rated output
Nonlinearity	\pm 0.02% of rated output
Hysteresis	\pm 0.02% of rated output
Repeatability	\pm 0.02% of rated output
Temp. effect on output	\leq 0.002% of applied output/ $^{\circ}$ C
Temp. effect on zero	\leq 0.002% of rated output/ $^{\circ}$ C
Safe Temp. Range	-10 $^{\circ}$ C to + 70 $^{\circ}$ C
Temp. Compensated	-10 $^{\circ}$ C to + 50 $^{\circ}$ C
Safe Overload	150%
Input Impedance	387 ohm \pm 5 ohm
Output Impedance	350 ohm \pm 3 ohm
Insulation Resistance	\geq 5000 M ohm (50V DC)
Rated Excitation	10V DC/AC
Maximum Excitation	15V DC/AC
Cable Length	20 ft (6.1 m)
Cable Color Code	Red(+E) Black(-E) Green(+S) White(-S)

美国 Transcell SBSB 悬臂梁称重传感器型号:

SBSB-ESH-1t; SBSB-1tSS ESH;
 SBSB-ESH-1.5t; SBSB-1.5tSS ESH;
 SBSB-ESH-2t; SBSB-2tSS ESH;
 SBSB-ESH-2.5t; SBSB-2.5tSS ESH;
 SBSB-ESH-5t; SBSB-5tSS ESH;
 SBSB-ESH-7.5t; SBSB-7.5tSS ESH;
 SBSB-1K SBSB-1000LB
 SBSB-2.5K SBSB-2500LB
 SBSB-4K SBSB-4000LB
 SBSB-5K/SE SBSB-5000LB
 SBSB-10K SBSB-10000LB

SBSB-250lb 称重传感器;
 SBSB-250kg 称重传感器;
 SBSB-500kg 称重传感器;
 SBSB-1000kg 称重传感器;
 SBSB-1500kg 称重传感器;
 SBSB-2000kg 称重传感器;
 SBSB-2500kg 称重传感器;
 SBSB-5000kg 称重传感器;
 SBSB-7500kg 称重传感器;
 Transcell SBSB称重传感器量程与接线方式:

Schematic



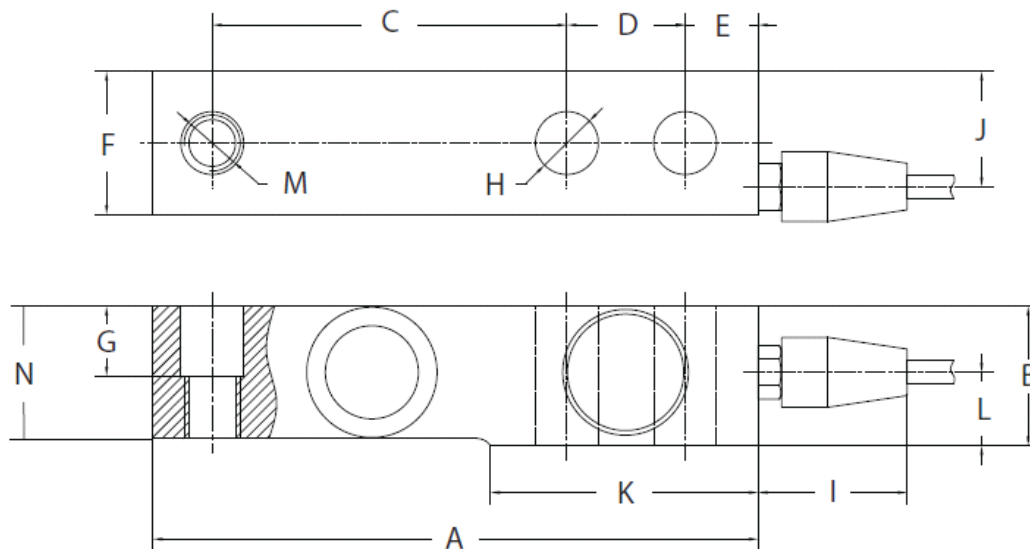
Capacities / Model

1,000 lb	SBSB-1K
2,500 lb	SBSB-2.5K
4,000 lb	SBSB-4K
5,000 lb	SBSB-5K/SE
10,000 lb	SBSB-10K

美国Transcell SBSB悬臂梁称重传感器尺寸:

Dimensions

Capacity		A	B	C	D	E	F	G	H	I	J	K	L	M	N
1,000 - 5,000 lb	in	5.12	1.18	3.00	1.00	0.62	1.21	0.59	0.53	1.26	0.97	2.26	0.62	1/2"-20 UNF	1.12
	mm	130.0	30.0	76.2	25.4	15.7	30.7	15.0	13.5	32.0	24.7	57.5	15.8		28.4
10,000 lb	in	6.75	1.44	3.75	1.50	0.75	1.44	0.69	0.78	1.26	1.25	3.00	0.74	3/4"-16 UNF	1.34
	mm	171.5	36.5	95.3	38.1	19.1	36.5	17.5	19.8	32.0	31.7	76.2	18.7		34.0



以上是Transcell SBSB称重传感器详细信息