



LS-60 Level Sensor

The LS-60 is the latest advancement in the LS level sensor product line introduced by Power Components of Midwest in 1990. This new model has been completely re-tooled inside and out. Extensive testing procedures ensure the LS-60 will perform exactly as expected. Our product label is your guarantee.

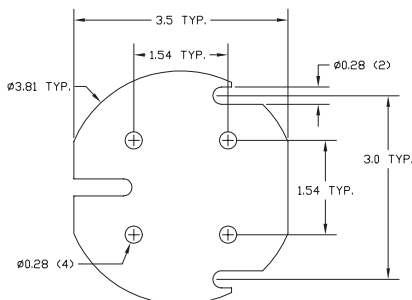
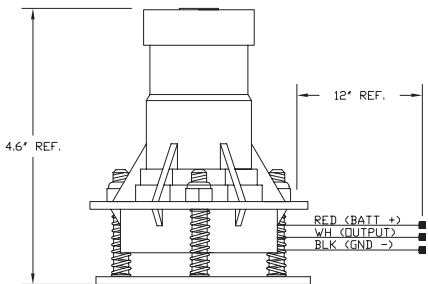


Plastic components, internal contacts, and concentricity have been greatly enhanced, resulting in superior trip accuracy and reliability. The height has been reduced, and O-ring seals have been added top and bottom to ensure hermeticity necessary to survive the harshest conditions. The standard top-mounted bubble level makes calibration easy, and the new mounting bracket offers additional mounting options. Custom X and Y trip angles can be created quickly and with minimal expense.

Months of rigorous product testing were conducted prior to final tooling to ensure the highest level of reliability under the most demanding conditions. 100% on-line automated trip angle and timing test equipment assures sensor accuracy. All electronics are tested under load prior to final assembly.

As with earlier LS models, a variety of terminations and visual angle confirmations are possible via colored top rings.

All existing LS-36 sensor configurations can be easily converted to the new LS-60.

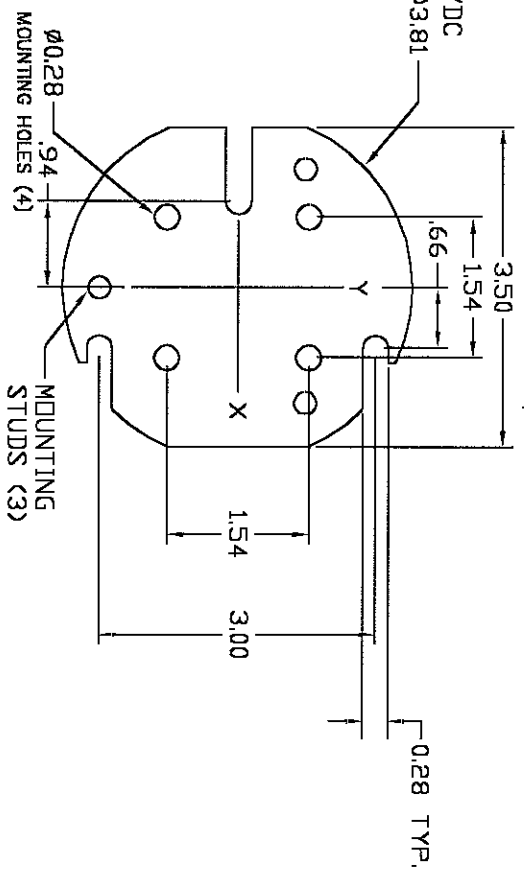
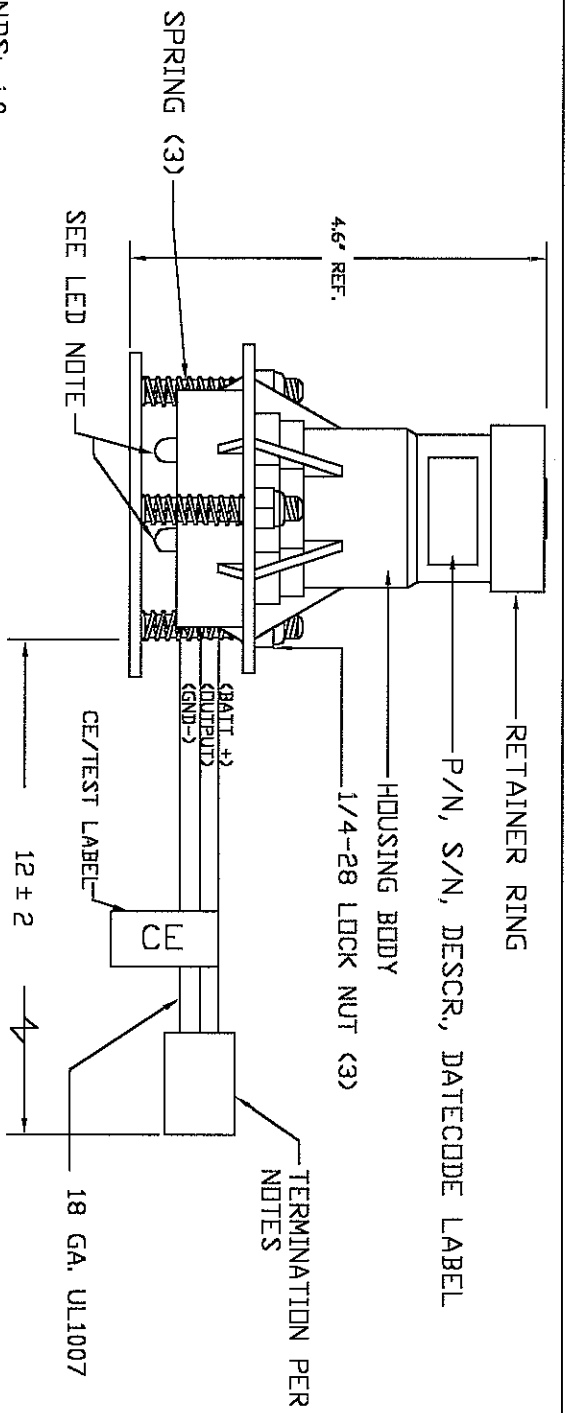


LED Functions

- Red = output signal; steady because of time delay; "On" in level condition (to verify)
- YELLOW = pendulum (instant read-out if bouncing - flashing)

SPECIFICATIONS NOTES:

1. OPERATIONAL ANGLES:
 X AXIS: 3.0
 Y AXIS: 3.0
2. ON DELAY (TRIGGER) SECONDS: 1.0
3. OFF DELAY (RESET) SECONDS: 0
4. OPERATING VOLTAGE (DC ONLY) B+ 9-30VDC
 OUTPUT RELAY VOLTAGE
 AT LEVEL OPEN CLOSED
 AT DP, ANGLE B+ CLOSED
5. LED FUNCTIONS:
 YELLOW ON AT DP, ANGLE
 RED ON UNTIL OUTPUT SWITCHES
6. RETAINER RING COLOR: WHITE
 WIRE COLORS:
 BATT+(B+): RED
 OUTPUT: GREEN
 GND-1: BLACK
8. TERMINATION:
 X NONE, STRIP LENGTH 25
 INDIVIDUAL TERMINALS _____
 CONNECTOR: _____
 PIN 1 DR A: _____
 PIN 2 DR B: _____
 PIN 3 DR C: _____
9. WITHSTAND A MECHANICAL DRDP OF 1 METER
10. TEMP RANGE: -40° TO 85°C



TOP VIEW OF BRACKET (12GA)

ACAD = LATEST REVISION = CRITICAL SPEC.

TOLERANCES UNLESS SPECIFIED
 NO PLACES = +/.25"
 .0 = +/-.05"
 .00 = +/-.02"
 .000 = +/-.010"
 ANG = +/-.1°

REV	DATE	EXPL	DESCRIPTION	PROJECT ENGINEER	DRAWN	CHECK
A	5/20/02	3708	RELEASED	LPH	LPH	JDW

www.titl-china.com
 Vigor Technology
 Tel: 021-58404921
 shvigor@sh163.net

SCALE: N/A	DATE: 5/20/02	BY: LPH	CH: JDW
MATERIAL: N/A			
TITLE: LS80-03.0-H1.0-12/24	PROJ. NO: 501		
SIZE: A	DWG. NO: LS80-00721	REV: A	PAGE: 1 OF 1